



ALAMO
COLLEGES

Exterior Graphic Standards Best Practices Manual



ALAMO
COLLEGES

General Specifications



Identification

Pending Client Direction	E.ID.01 - Building Identification Ground Mounted
Pending Client Direction	E.ID.02 - Building Identification Wall Mounted Primary
Pending Client Direction	E.ID.03 - Building Identification Wall Mounted Secondary
	E.ID.04 - Campus Secondary Entrance Identification
	E.ID.05 - Campus Boundary Markers
Pending Client Direction	E.ID.06 - Parking Lot Identification Pole Mounted
	E.ID.07 - Parking Lot Identification Post and Panel
	E.ID.08 - Campus Banners

Directional

- E.D.01 - Pedestrian Directional
- E.D.02 - Vehicular Directional Ground Mounted
- E.D.03 - Vehicular Directional Post and Panel

Orientation

	E.O.01 - Campus Map Non Illuminated
Pending Client Direction	E.O.02 - Campus Map Illuminated

Regulatory

- E.R.01 - No Smoking
- E.R.02 - Stop Sign
- E.R.03 - Yield Sign
- E.R.04 - Pedestrian Crossing
- E.R.05 - Speed Limit
- E.R.06 - Accessible Route



ABCDEFGHIJKLMNOPQRSTUVWXYZ
abcdefghijklmnopqrstuvwxyz
0123456789

① Primary Font: Swiss 721 Condensed BT Bold
Scale: None

ABCDEFGHIJKLMNOPQRSTUVWXYZ
abcdefghijklmnopqrstuvwxyz
0123456789

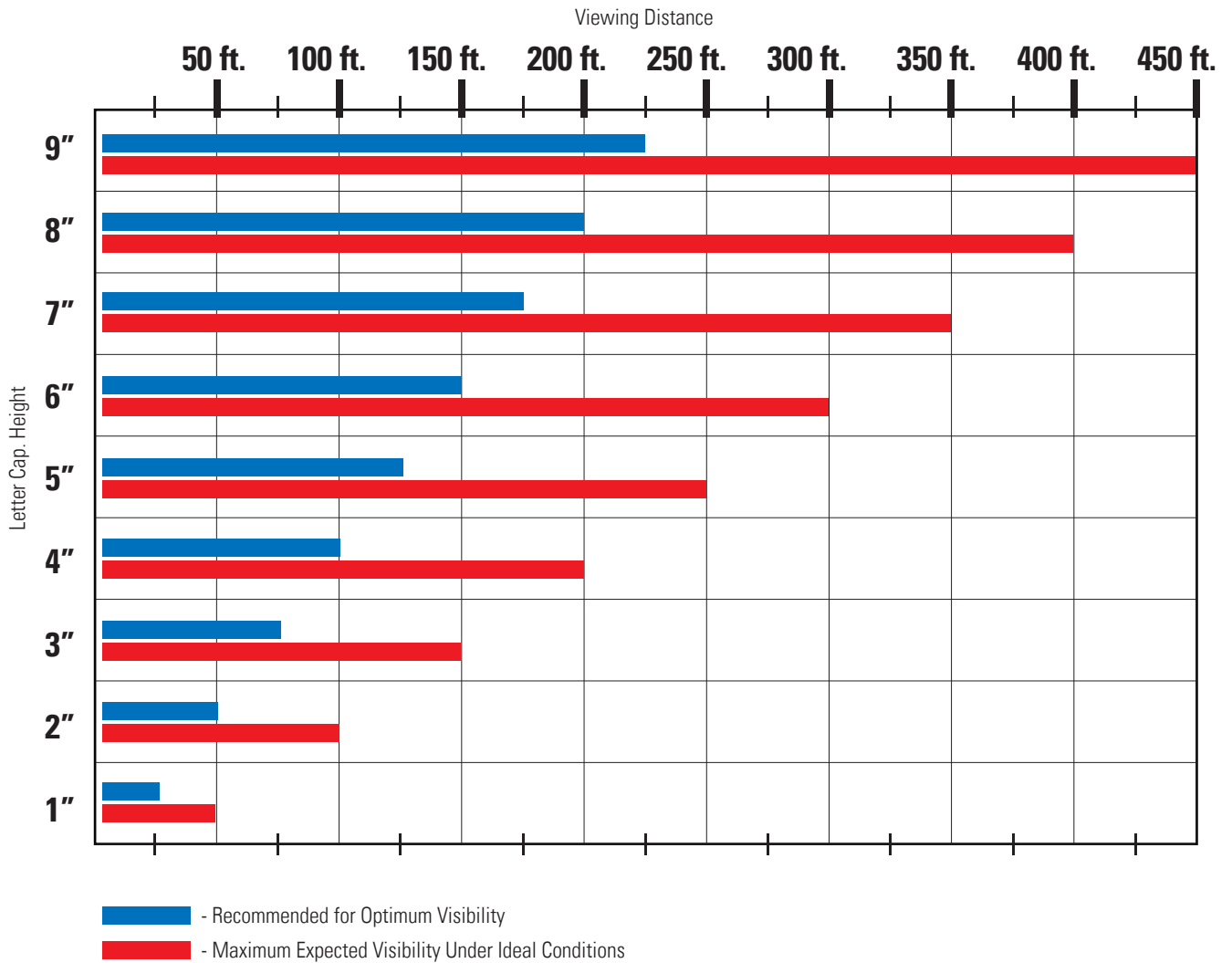
② Secondary Font: Swiss 721 Condensed BT Roman
Scale: None



Distance and Visibility

Font style, size, material, color contrast and viewing condition contribute the legibility of text. The overall size of the lettering shall be determined by the distance from which the sign can be safely and easily read. The message should be concise as practical. Letters shall be adequately spaced and not crowded.

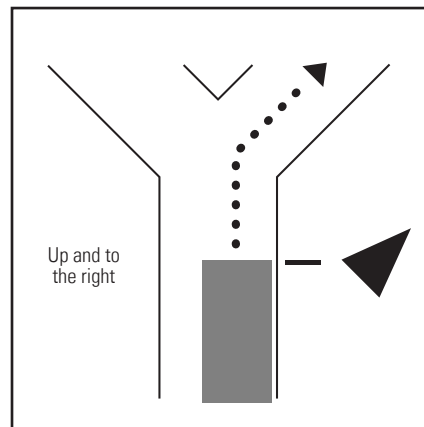
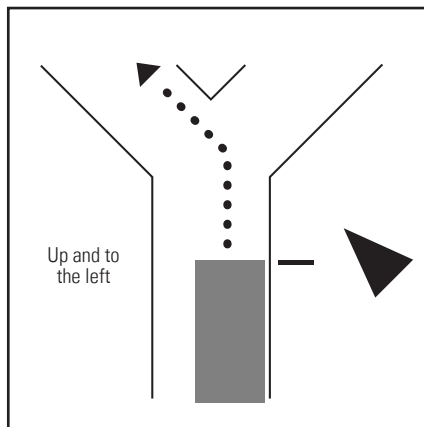
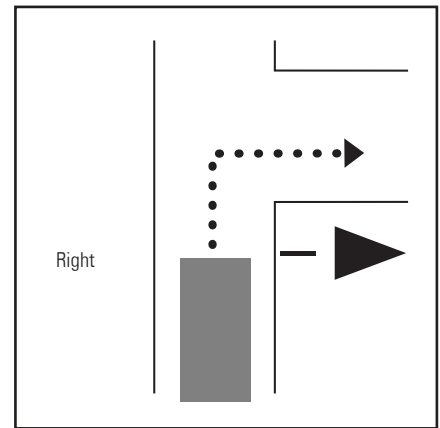
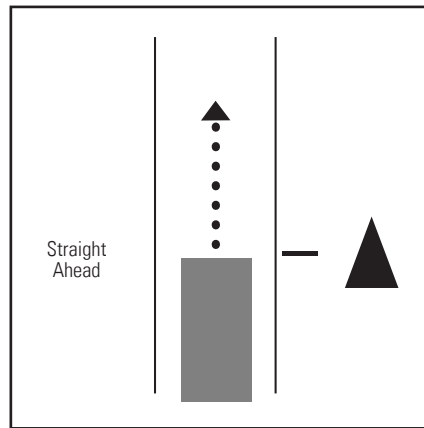
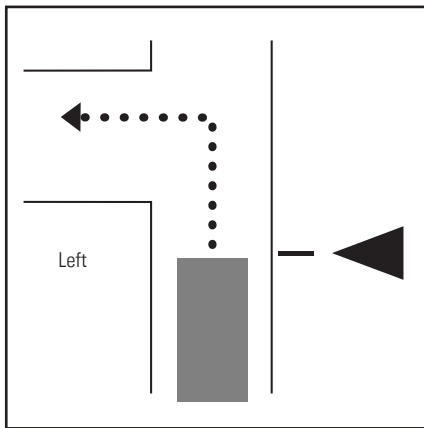
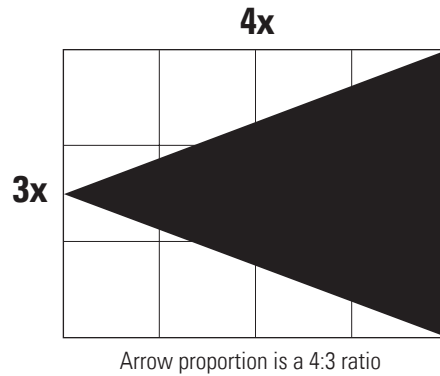
Below is a standard "rule of thumb" guide for legibility under ideal condition.





Directional Arrow Usability

Directional arrows used in this signage system are to be of the design and useage described on this page.





Logo Colors & Color Visibility

Every Alamo Colleges logo mark has the same blue (PMS 285) sky background. Each college has selected its own color to accompany this blue. selected its own color to accompany this blue. These colors cannot be altered or changed. In print, ideally, each logo should be reproduced with three inks: PMS 285, black and the specific college's color.

The PMS number and CMYK and RGB formulas for each college color are provided below.

The formulas for PMS 285 are: C=100, M=50, Y=0, K=0 and R=0, G=114, B=207



ALAMO
COLLEGES



ALAMO
COLLEGES

PALO ALTO COLLEGE

PMS 336

C=100, M=0, Y=60, K=40

R=0, G=102, B=82

PMS 3285

C=100, M=0, Y=50, K=10

R=0, G=147, B=131



ALAMO
COLLEGES



ALAMO
COLLEGES

SAN ANTONIO COLLEGE

NORTHEAST LAKEVIEW COLLEGE

PMS 368

C=60, M=0, Y=100, K=0

R=102, G=188, B=41

PMS 1797

C=0, M=100, Y=100, K=0

R=201, G=40, B=45



ALAMO
COLLEGES



ALAMO
COLLEGES

ST. PHILIP'S COLLEGE

NORTHWEST VISTA COLLEGE

PMS 2602

C=50, M=85, Y=0, K=0

R=127, G=75, B=152

PMS Reflex Blue

C=100, M=80, Y=0, K=0

R=0, G=37, B=150



Sign Substrate Color Palette

Important: Colors shown are for representation only. Use correct formula for accurate color match.



PMS 285



PMS 336



PMS 3285 - Palo Alto College



PMS 368 - Northeast Lakeview College



PMS 1797 - San Antonio College



PMS 2602 - Northwest Lakeview College



PMS Reflex Blue - St. Philip's College



Black

International Symbols

Symbols shown below should not be reproduced from this page. Digital files of these graphics are available from TBG Partners, Inc. at 512.327.1011.



Directional Arrow



Parking



Accessible Area



Service Area



Pedestrian Crosswalk



Restrooms



Cafeteria



Telephone



No Guns



No Phones



No Smoking

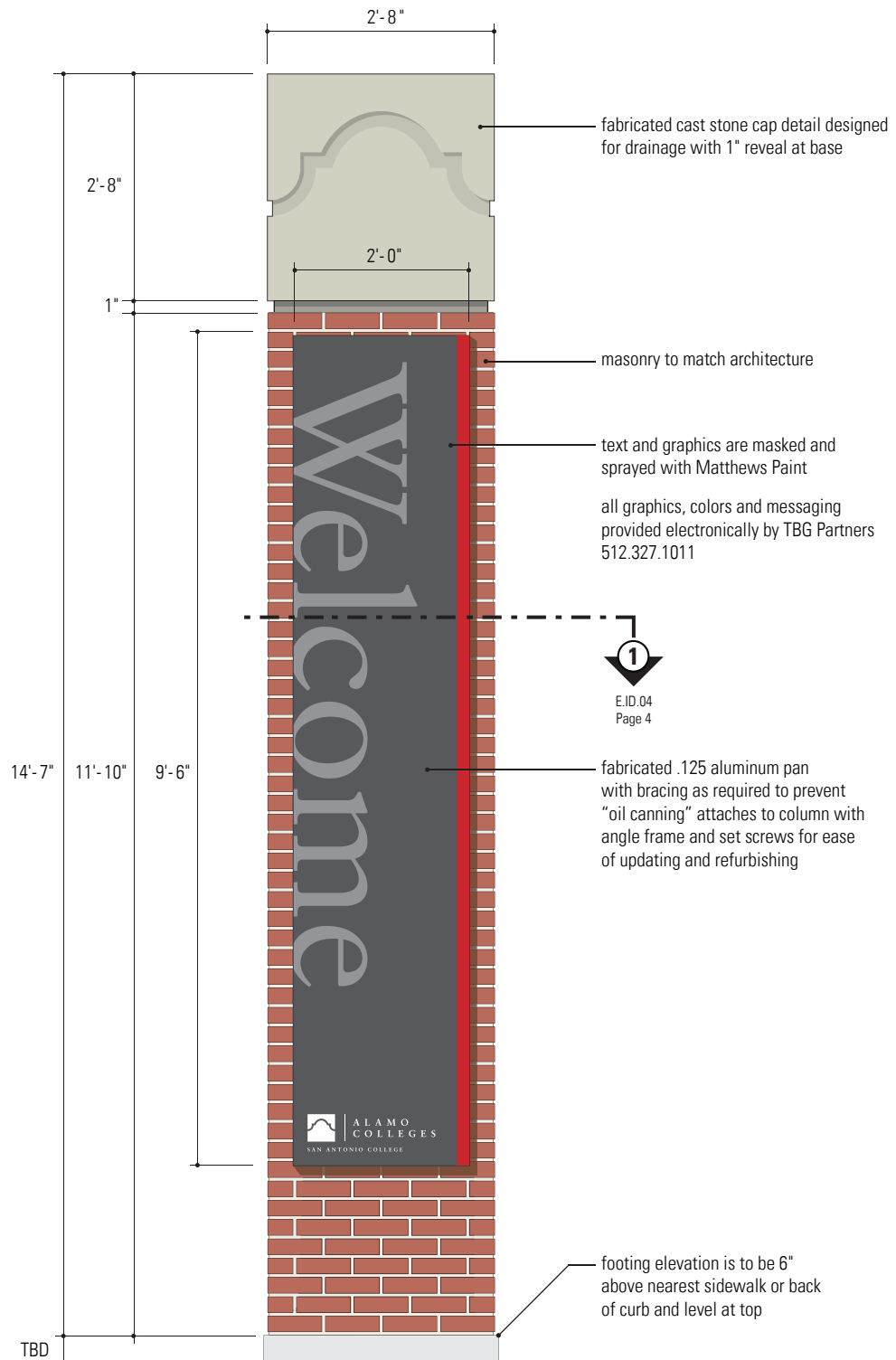


Do Not Enter



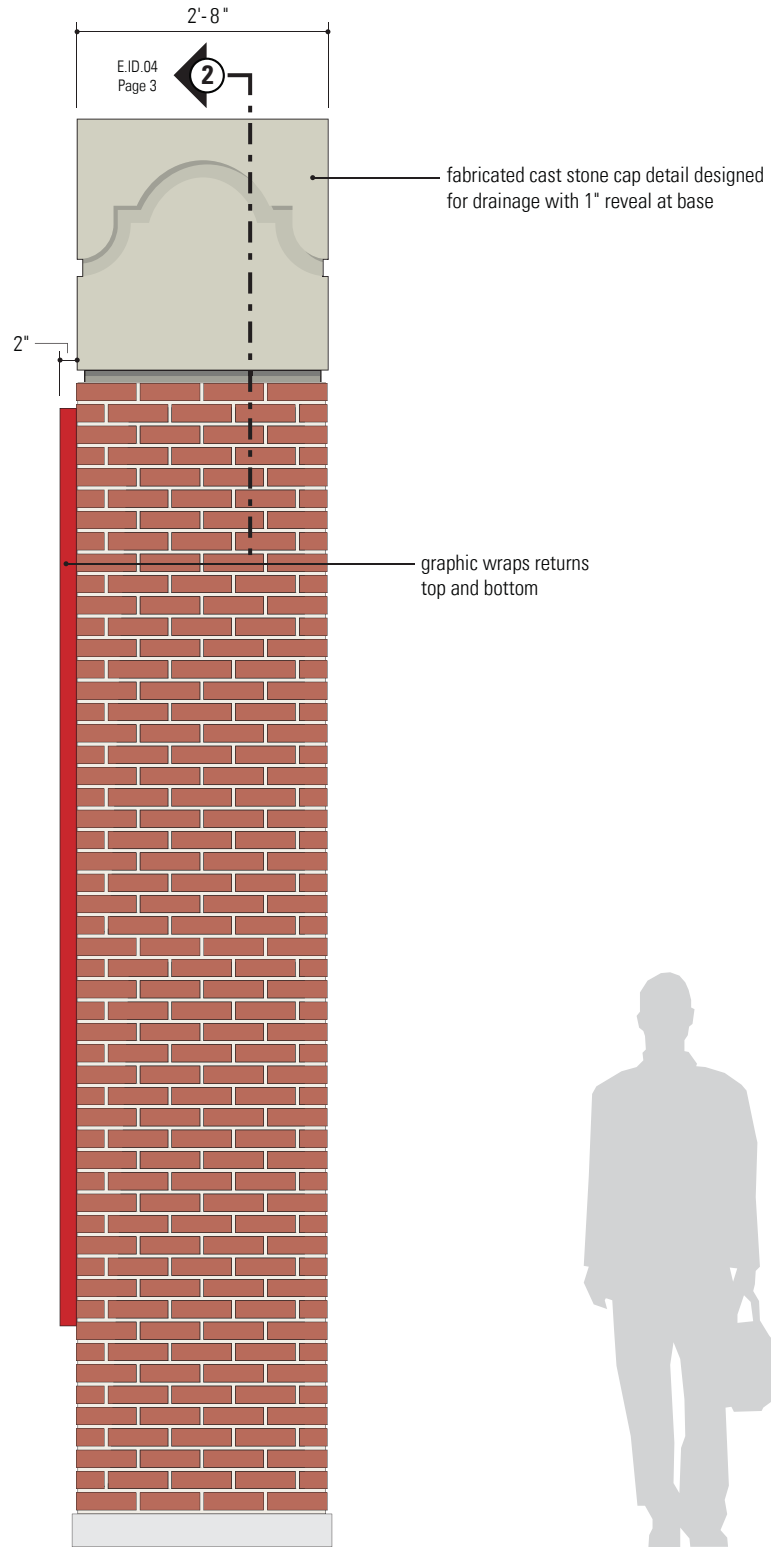
ALAMO
COLLEGES

IDENTIFICATION



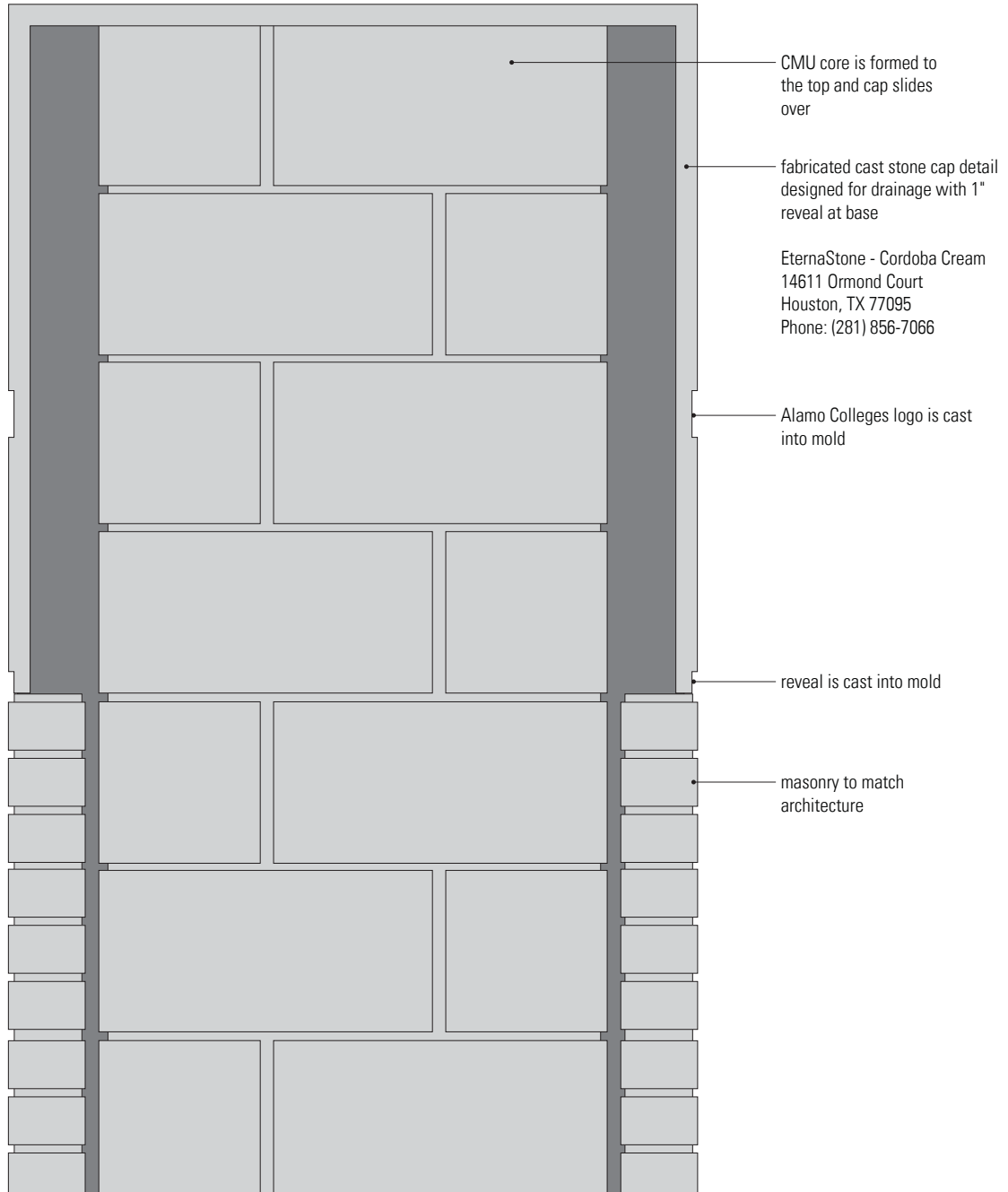
1 Elevation
Scale: 1/2" = 1'-0"

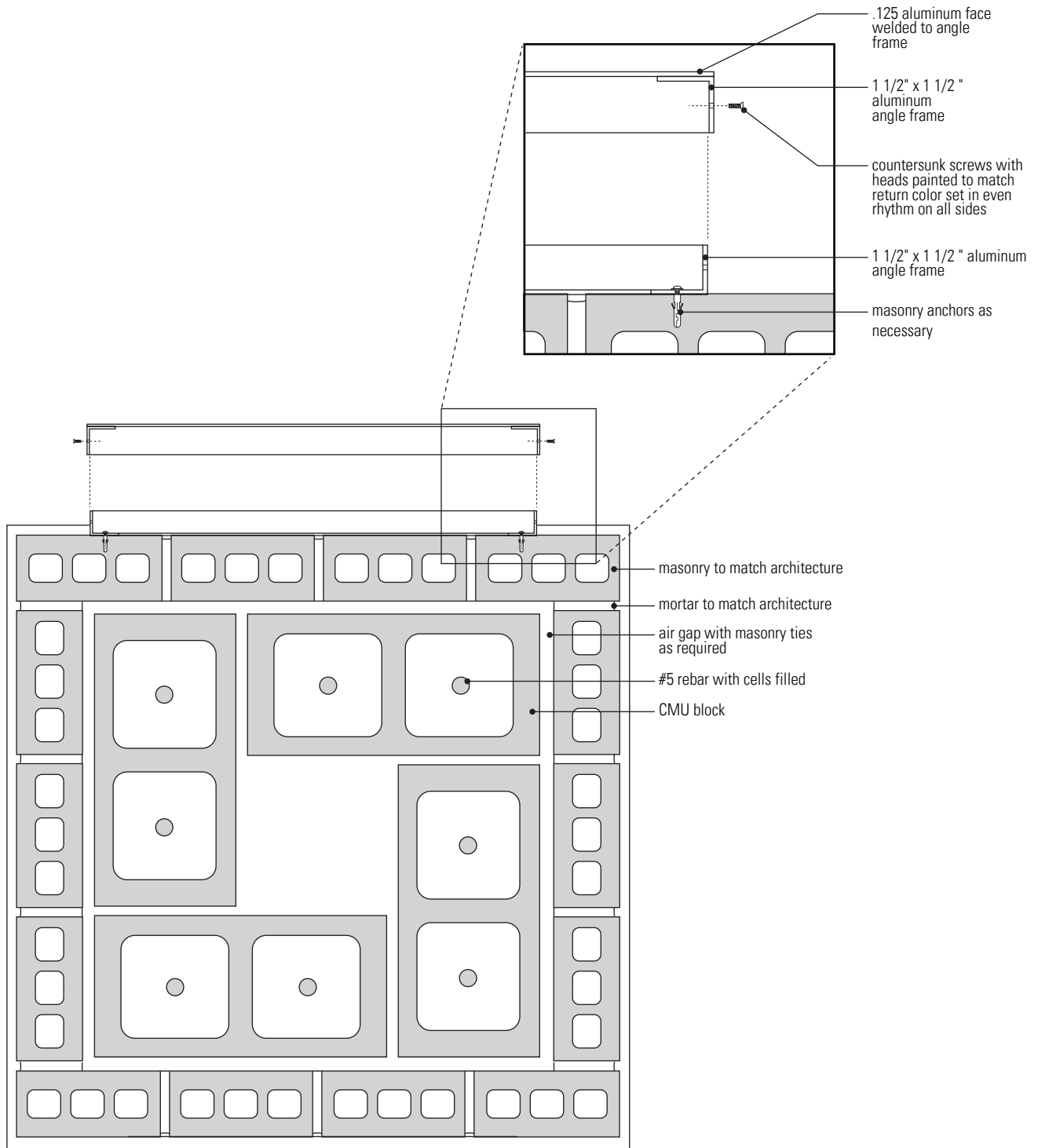
Note: Above drawings are to show design intent. All cabinets are to be constructed of aluminum angle and channel frame to be designed by sign fabricator and approved by owner. No visible fasteners and all screw heads are to be painted to match face color.



2 End View
Scale: 1/2" = 1'-0"

Note: Above drawings are to show design intent. All cabinets are to be constructed of aluminum angle and channel frame to be designed by sign fabricator and approved by owner. No visible fasteners and all screw heads are to be painted to match face color.





1 Section
Scale: 1/8" = 1"

Note: Above drawings are to show design intent. All signage to be engineered by sign fabricator with shop drawings to be submitted to and approved by owner prior to construction.



San Antonio College Scheme



Palo Alto College Scheme



Northeast Lakeview College Scheme

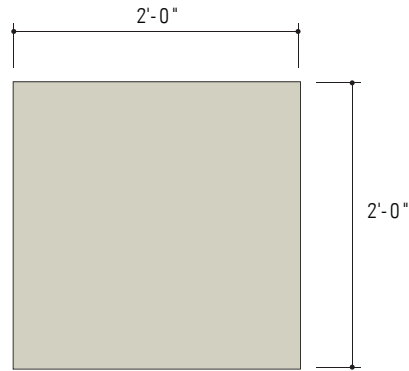


Northwest Vista College Scheme

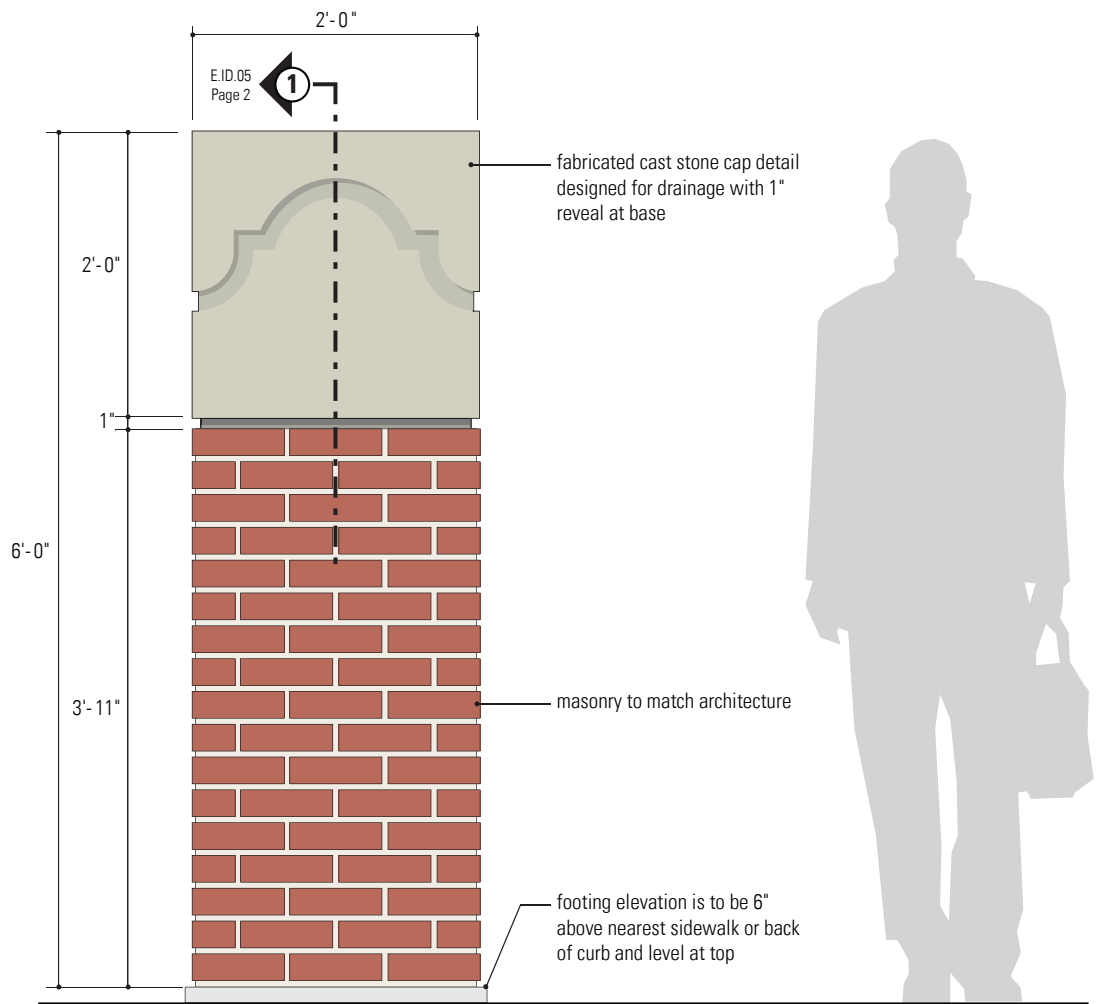


St. Philip's College Scheme

1 Accent Color Diagram
Scale: None

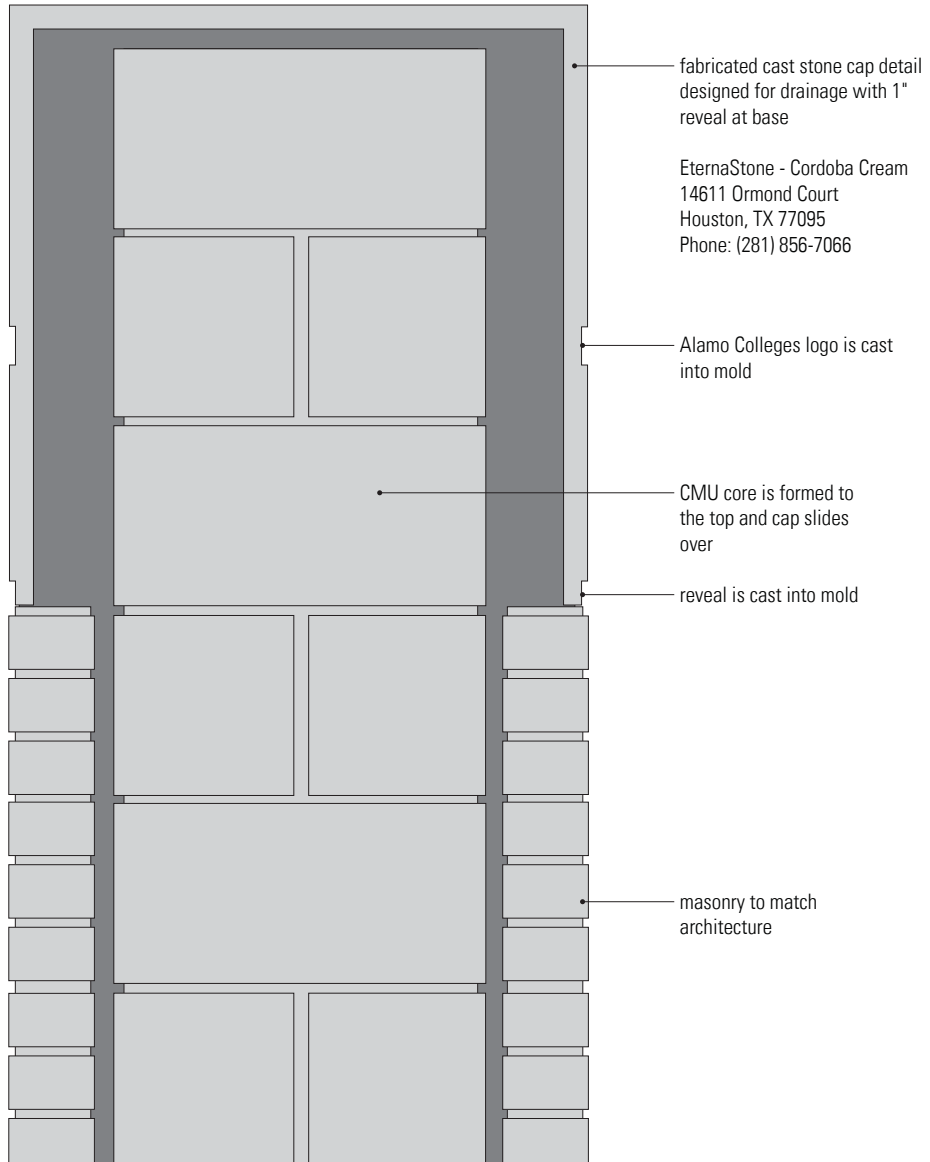


2 Plan View
Scale: 3/4" = 1'-0"



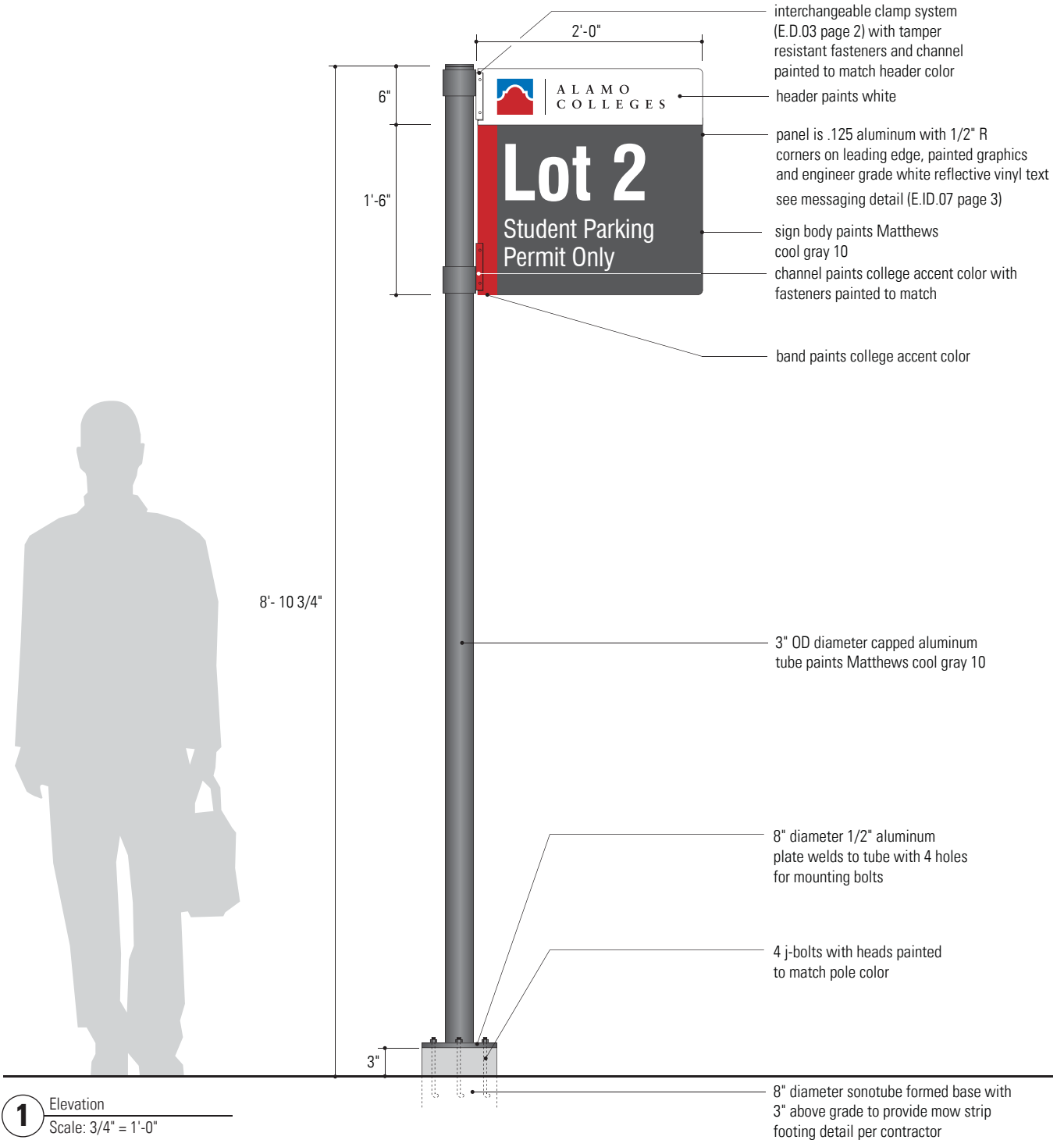
1 Elevation
Scale: 3/4" = 1'-0"

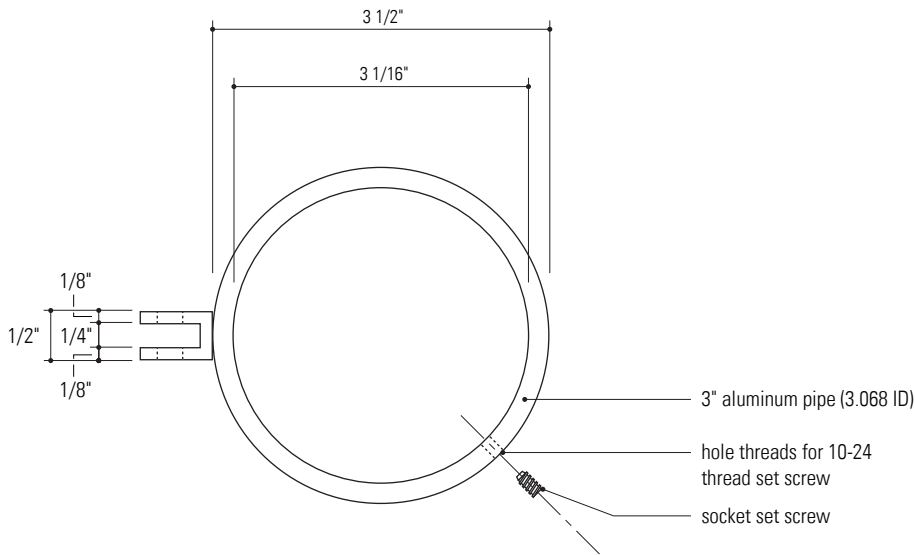
Note: Above drawings are to show design intent. All cabinets are to be constructed of aluminum angle and channel frame to be designed by sign fabricator and approved by owner. No visible fasteners and all screw heads are to be painted to match face color.



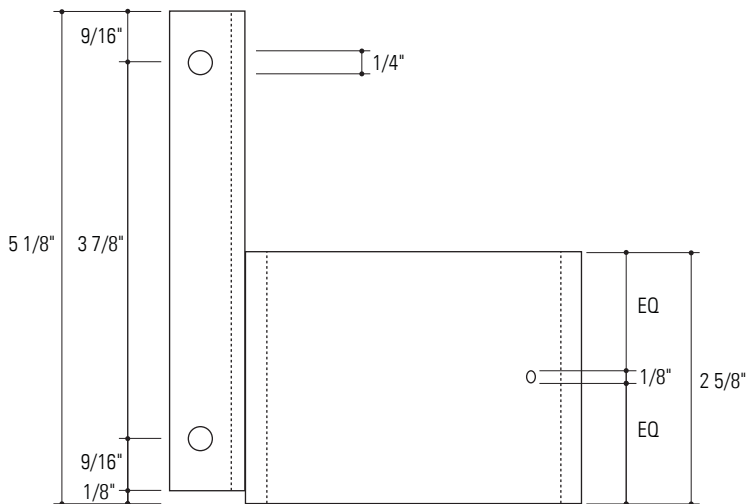
2 Section
Scale: 1/8" = 1"

Note: Above drawings are to show design intent. All signage to be engineered by sign fabricator with shop drawings to be submitted to and approved by owner prior to construction.

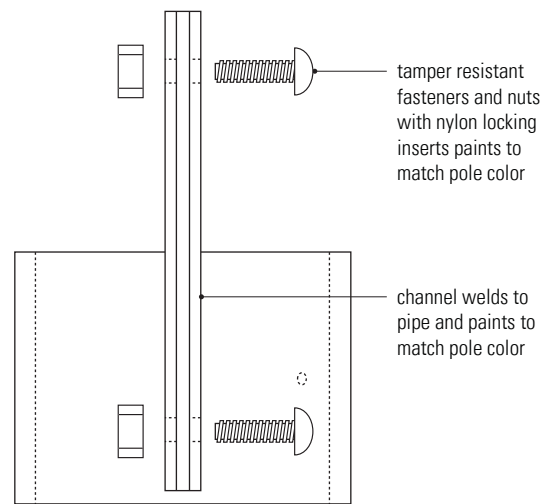




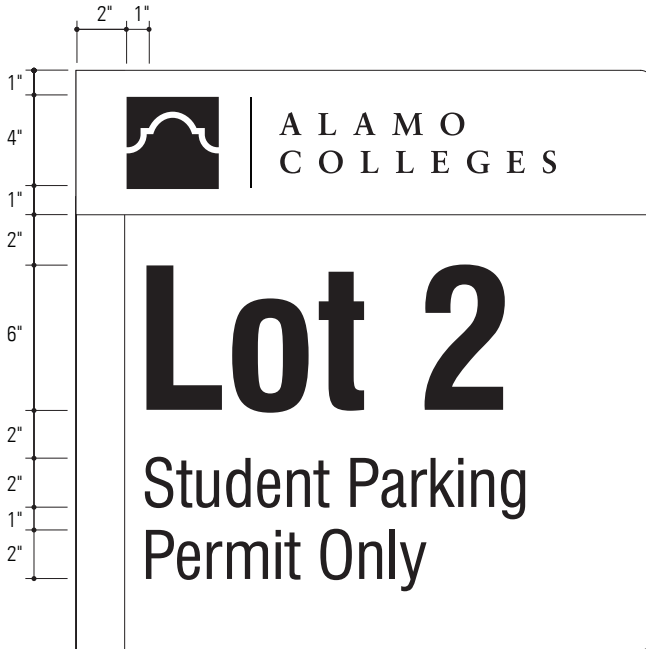
1 Top View - Clamp
Scale: 1/2" = 1"



2 Elevation - Clamp
Scale: 1/2" = 1"



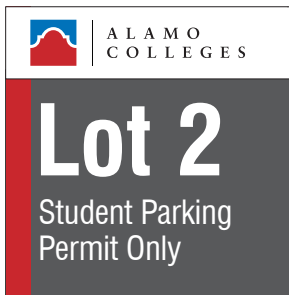
3 Elevation - Double Clamp
Scale: 1/2" = 1"



1 Graphic Detail
Scale: 1 1/2" = 1'-0"



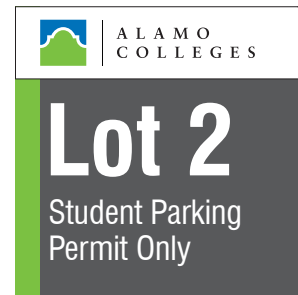
2 Graphic Detail
Scale: 1 1/2" = 1'-0"
Note: Messages justify on pole side of panel



San Antonio College Scheme



Palo Alto College Scheme



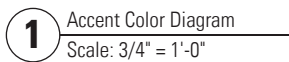
Northeast Lakeview College Scheme

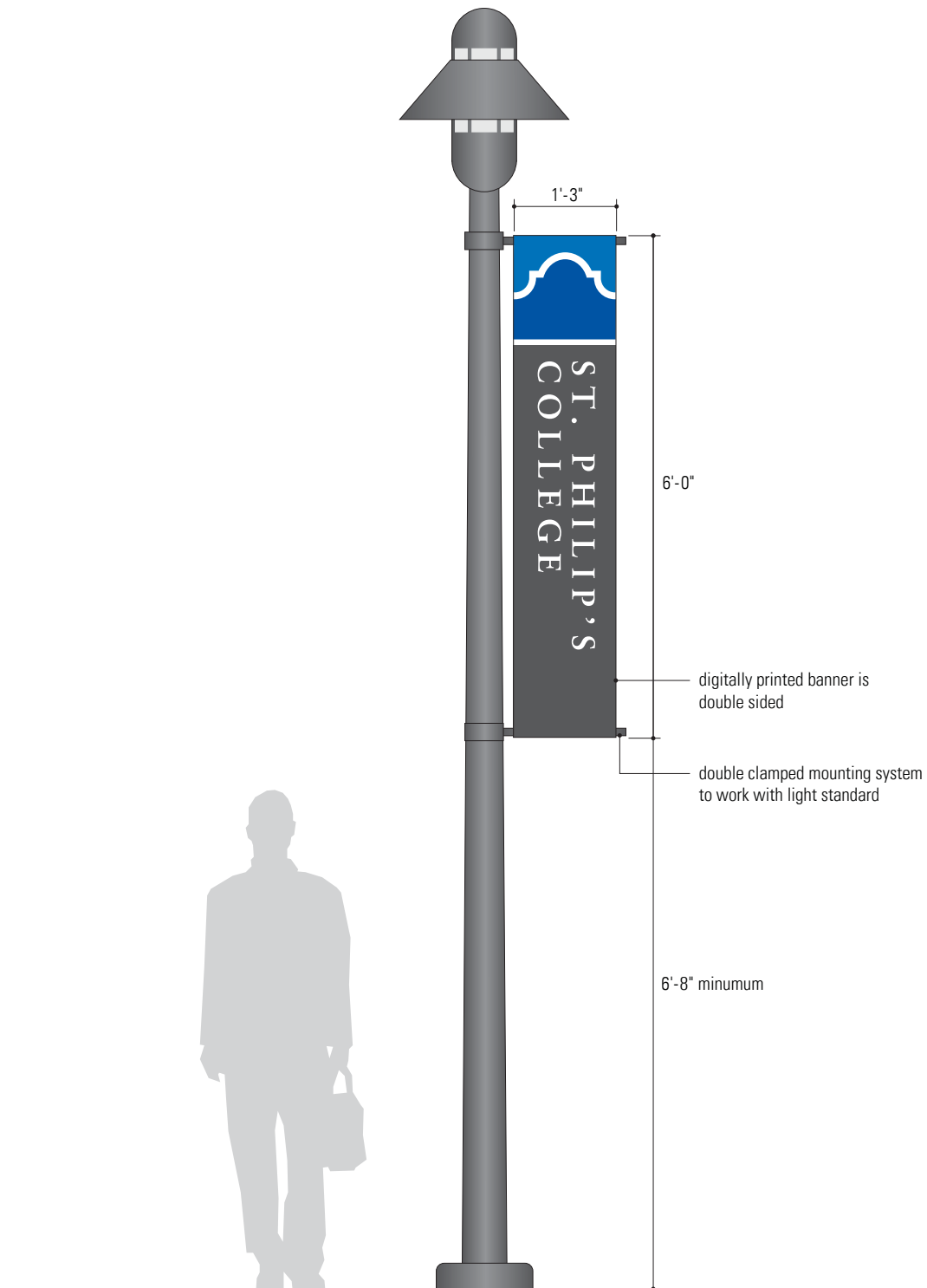


Northwest Vista College Scheme



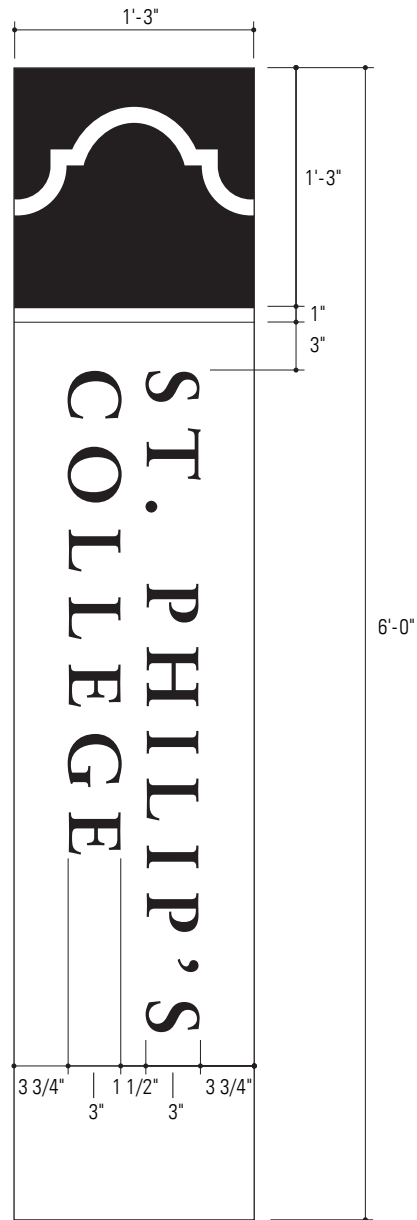
St. Philip's College Scheme





1 Elevation
Scale: 1/2" = 1'-0"

Note: Above drawings are to show design intent, shop drawings to be approved prior to fabrication. Fasteners and screw heads are to be painted to match face color.



1 Elevation - Banner
Scale: 1" = 1'-0"

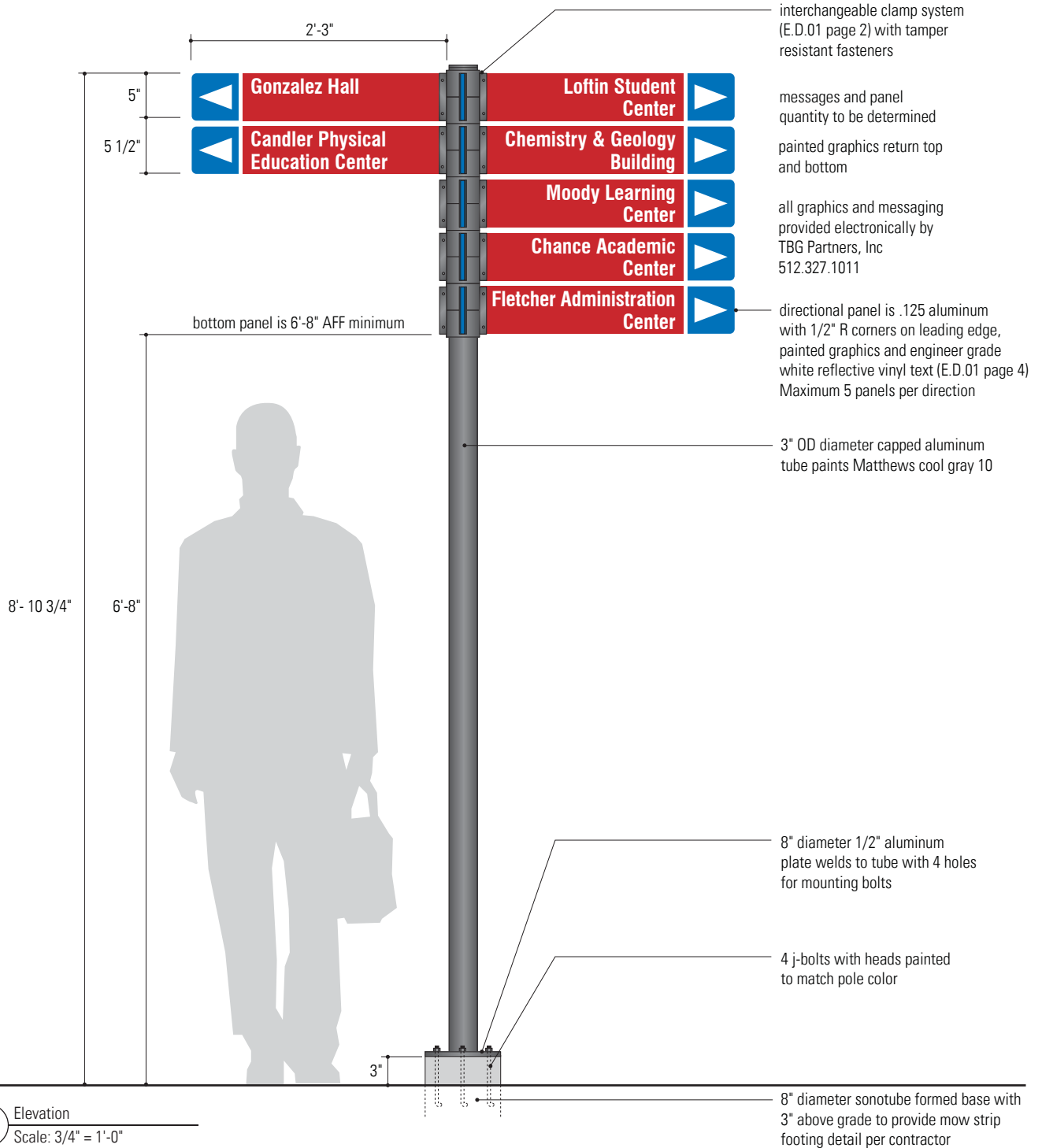


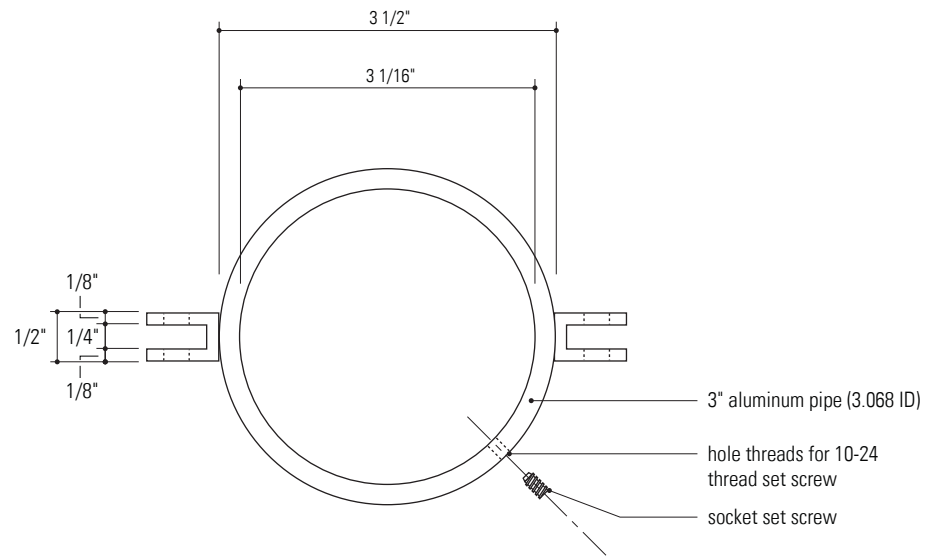
1 Elevation - Banner
Scale: 1 1/2" = 1'-0"



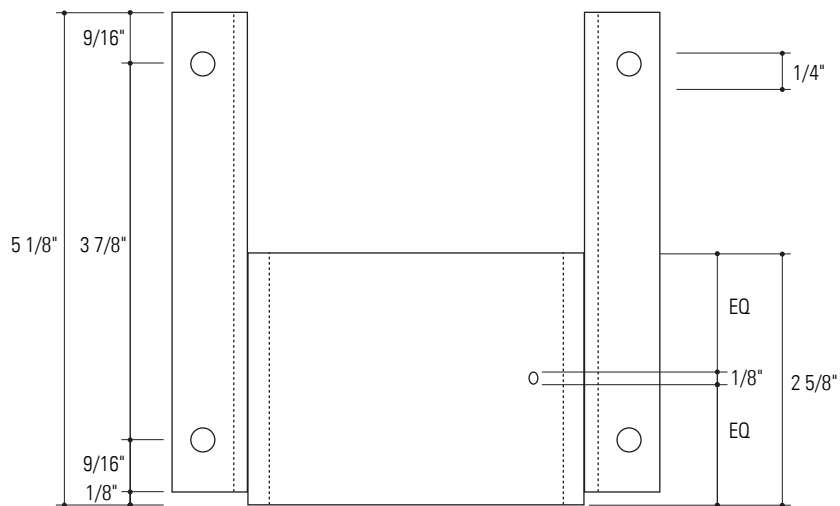
ALAMO
COLLEGES

DIRECTIONAL

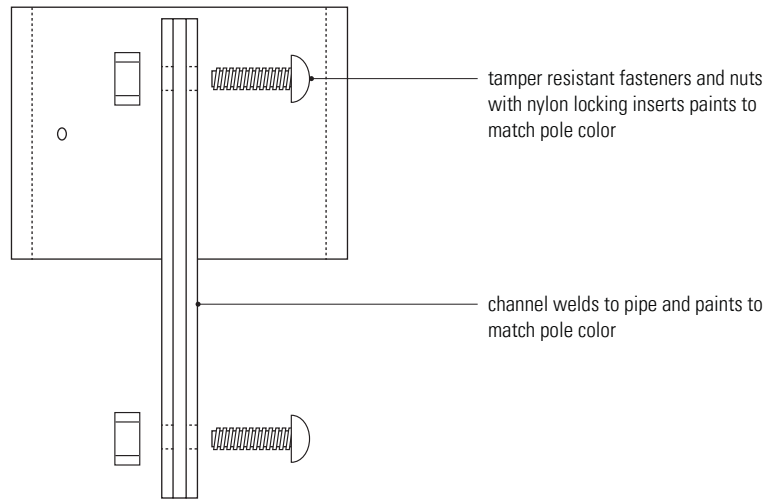




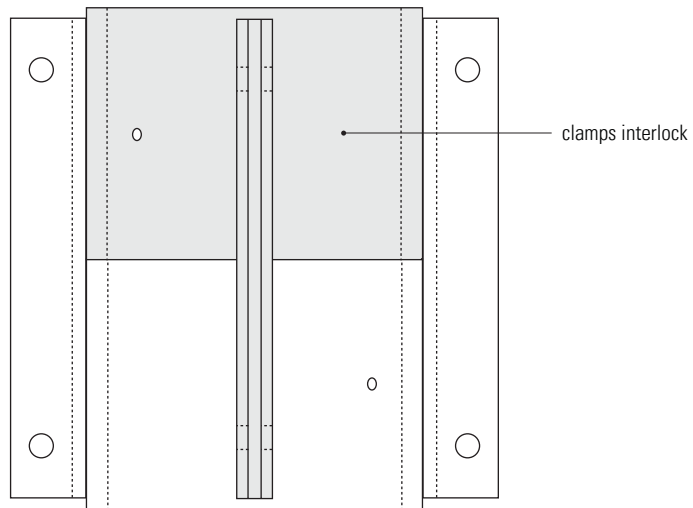
1 Top View - Double Clamp
Scale: 1/2" = 1"



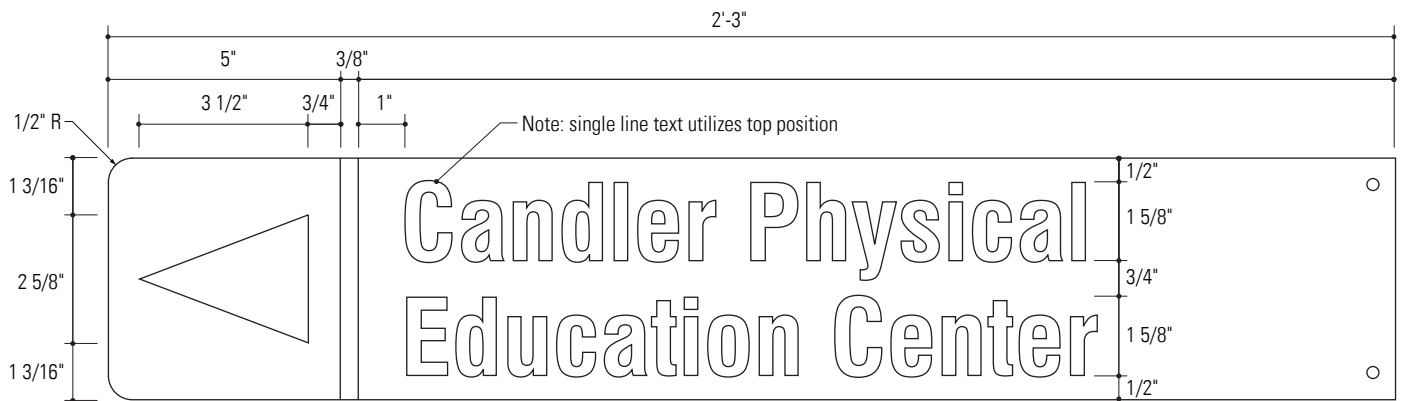
2 Elevation - Double Clamp
Scale: 1/2" = 1"



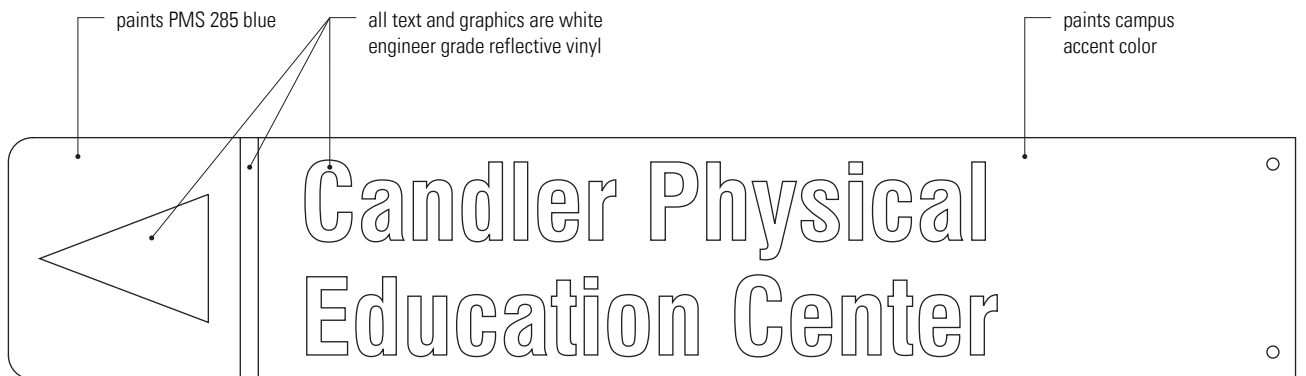
1 Elevation - Double Clamp
Scale: 1/2" = 1"



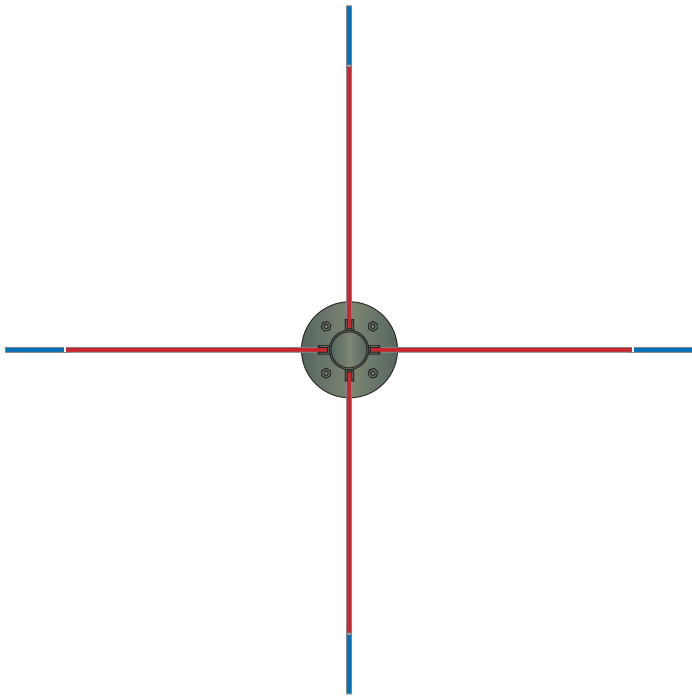
2 Elevation - Double Clamp
Scale: 1/2" = 1"



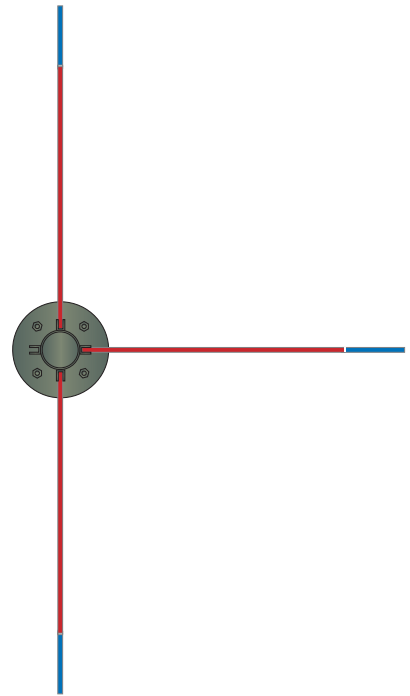
1 Elevation - Blade
Scale: 1/4" = 1"



2 Elevation - Blade
Scale: 1/4" = 1"



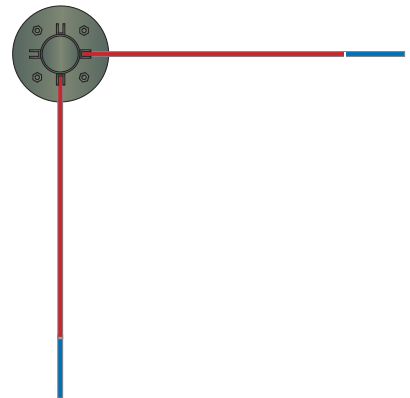
1 Plan View - Four Panel
Scale: 3/4" = 1'-0"



2 Plan View - Three Panel
Scale: 3/4" = 1'-0"



3 Plan View - One Panel
Scale: 3/4" = 1'-0"



4 Plan View - Two Panel
Scale: 3/4" = 1'-0"



San Antonio College Scheme



Palo Alto College Scheme



Northeast Lakeview College Scheme

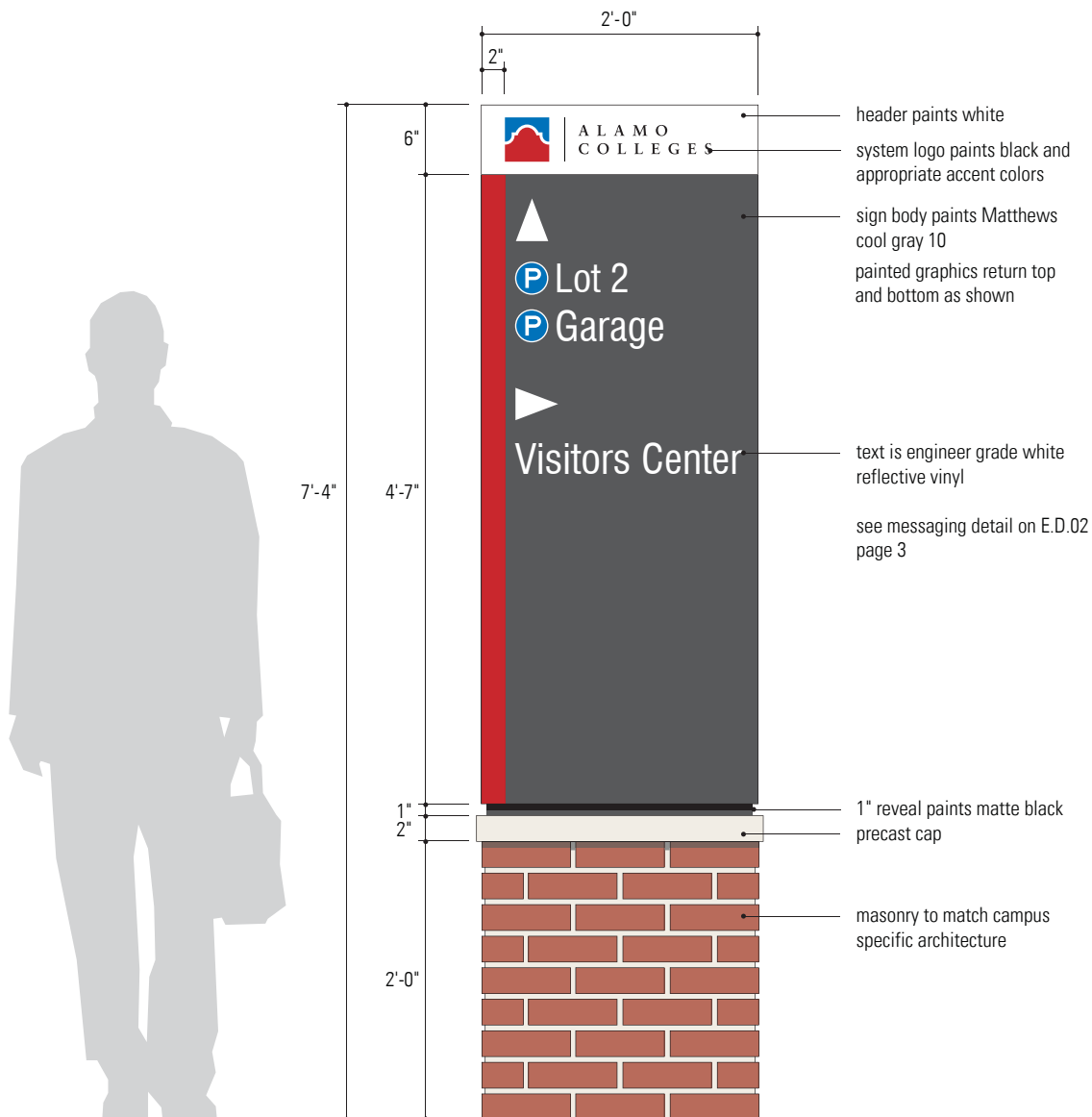


Northwest Vista College Scheme



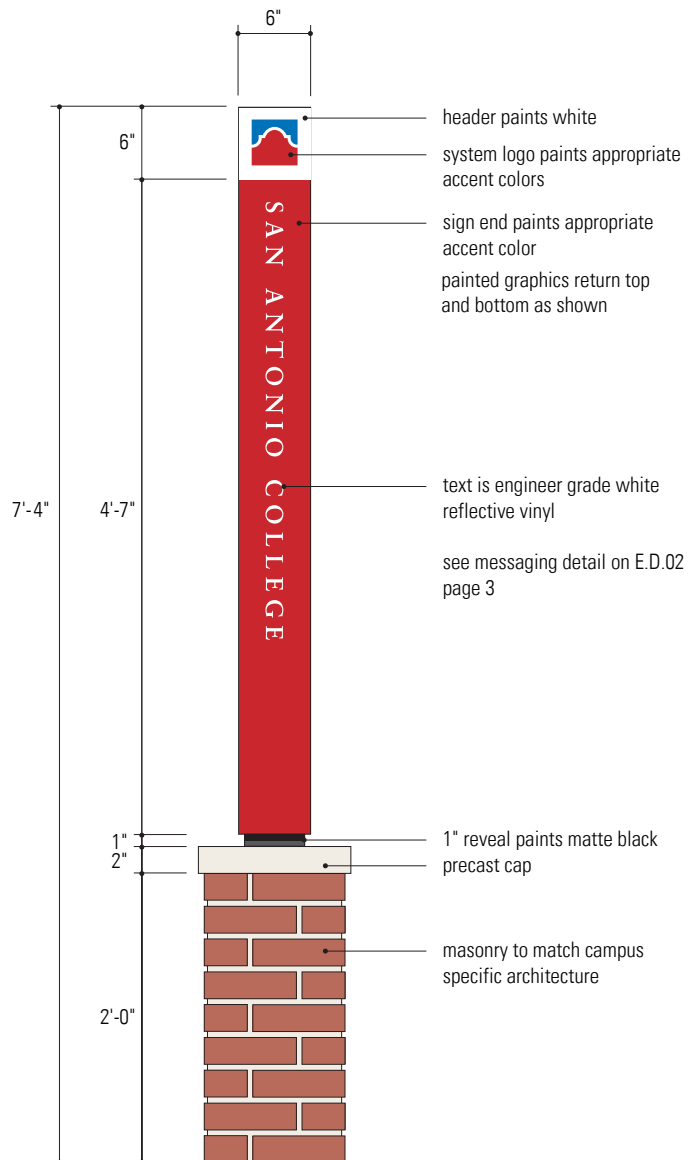
St. Philip's College Scheme

1 Accent Color Diagram
Scale: 1 1/2" = 1'-0"



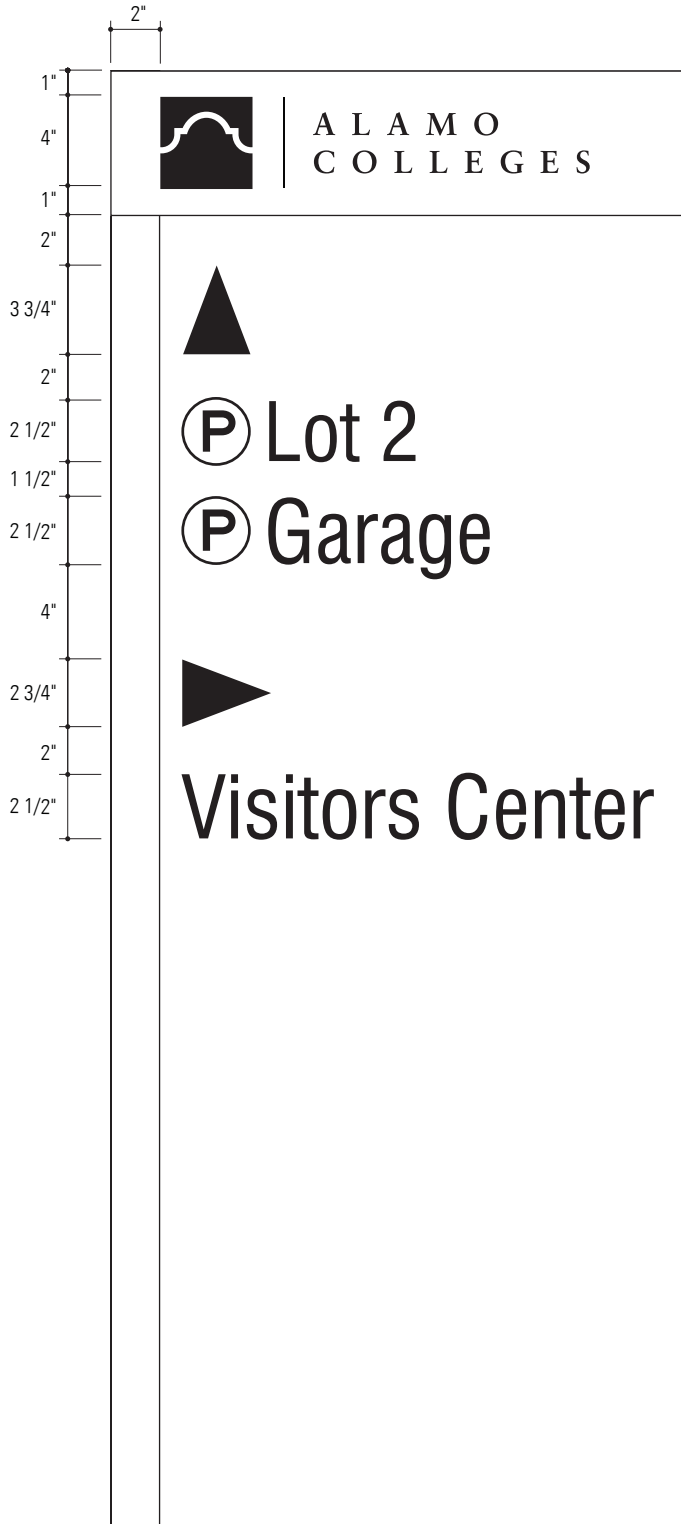
1 Elevation
Scale: 3/4" = 1'-0"

Note: Above drawings are to show design intent, shop drawings to be approved prior to fabrication. Fasteners and screw heads are to be painted to match face color.

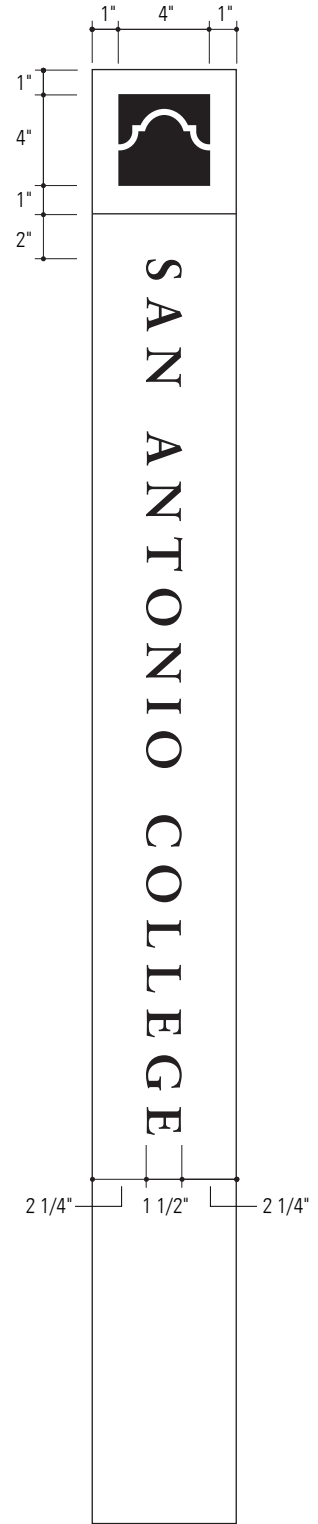


1 End View
Scale: 3/4" = 1'-0"

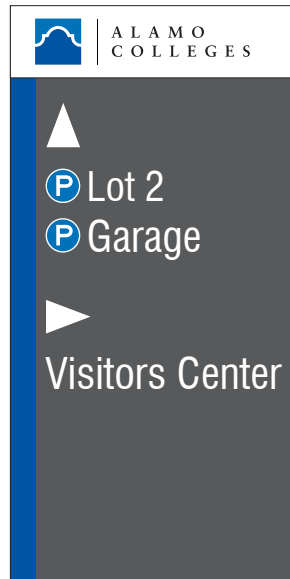
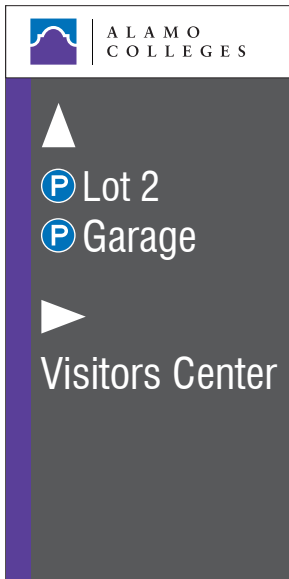
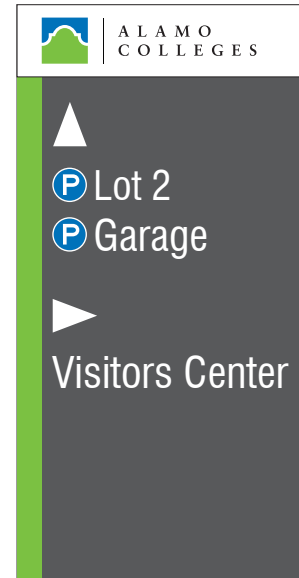
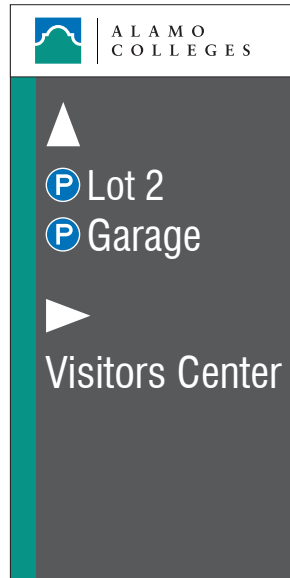
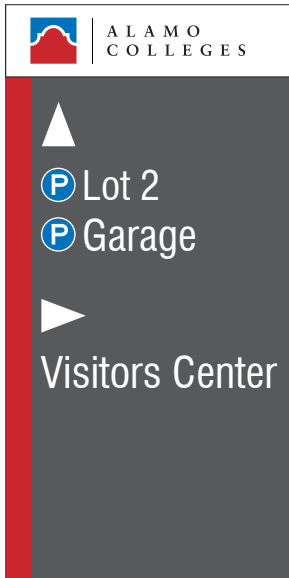
Note: Above drawings are to show design intent, shop drawings to be approved prior to fabrication. Fasteners and screw heads are to be painted to match face color.



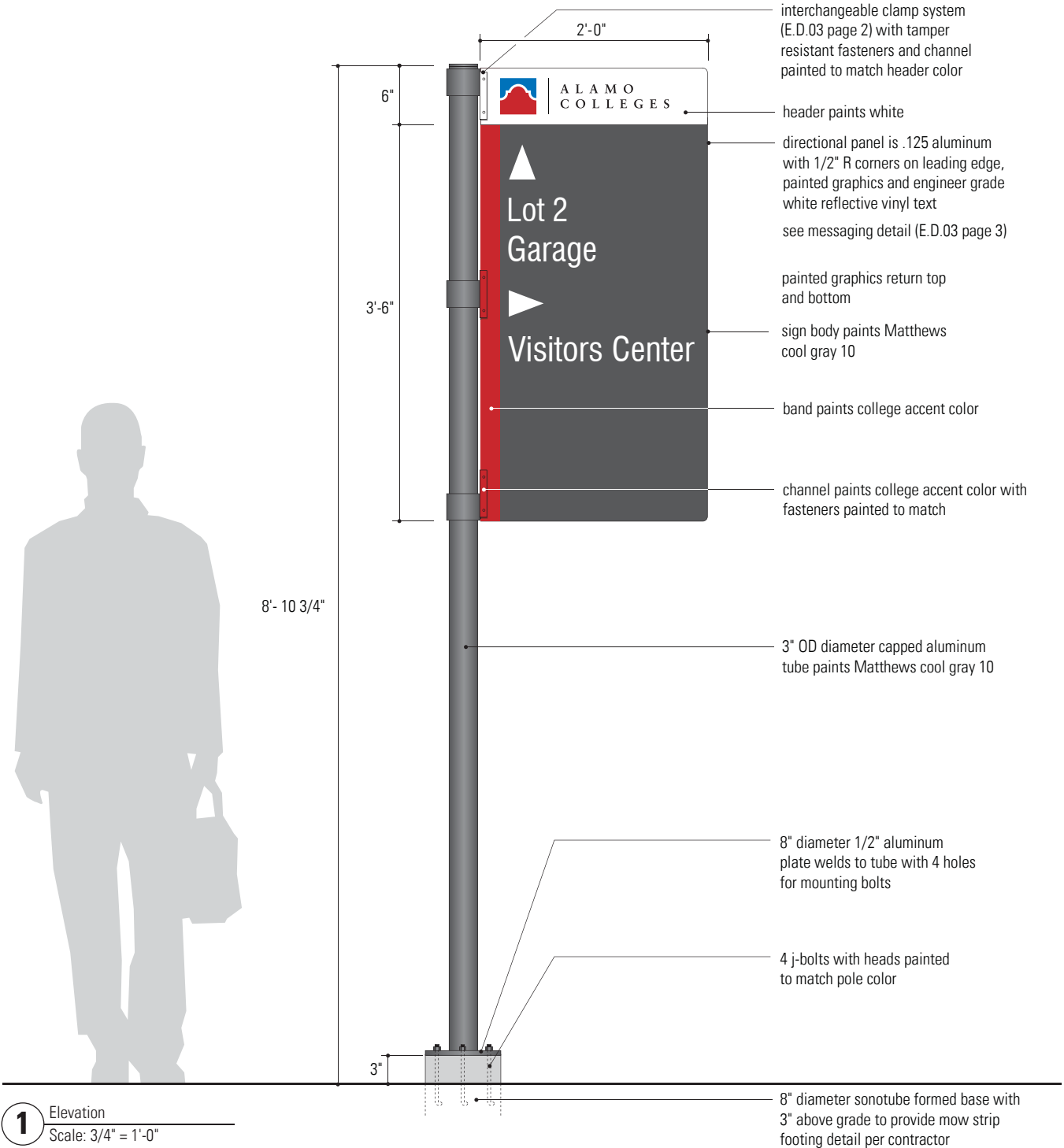
1 Graphic Detail
Scale: 1 1/2" = 1'-0"

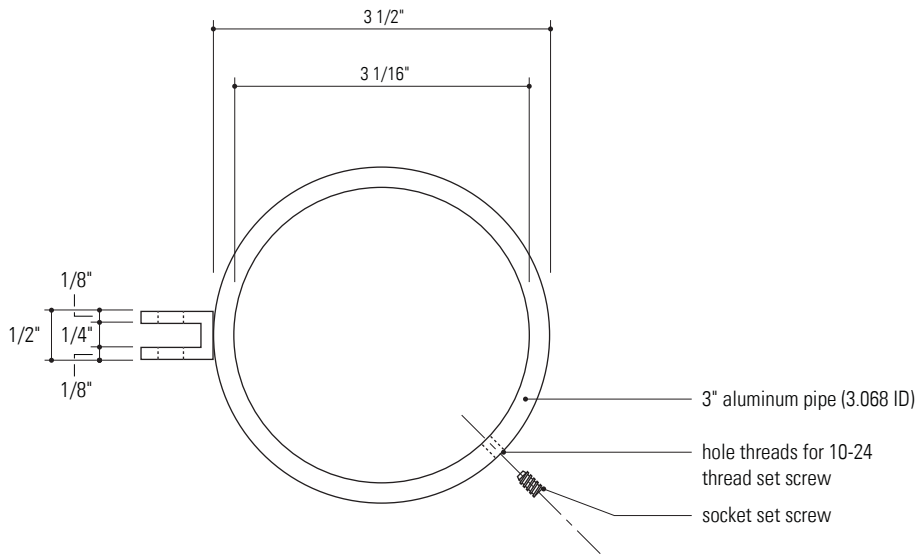


2 Graphic Detail
Scale: 1 1/2" = 1'-0"

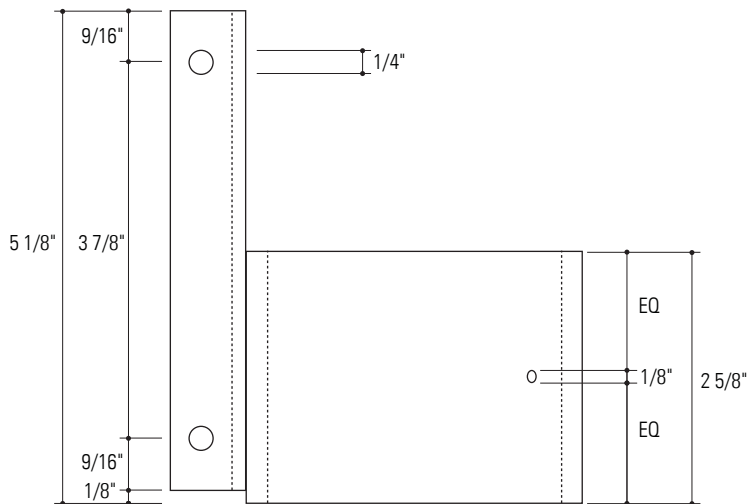


1 Accent Color Diagram
Scale: 3/4" = 1'-0"

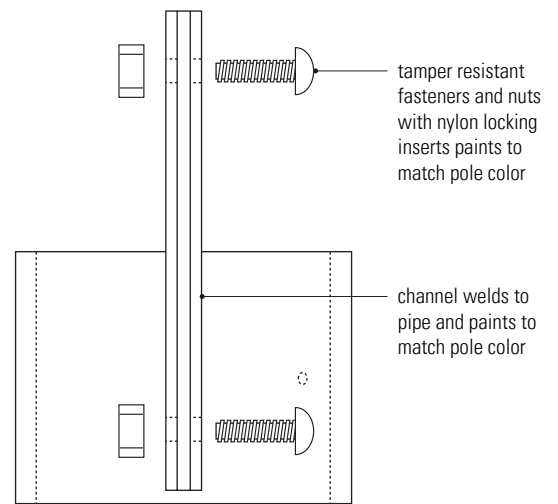




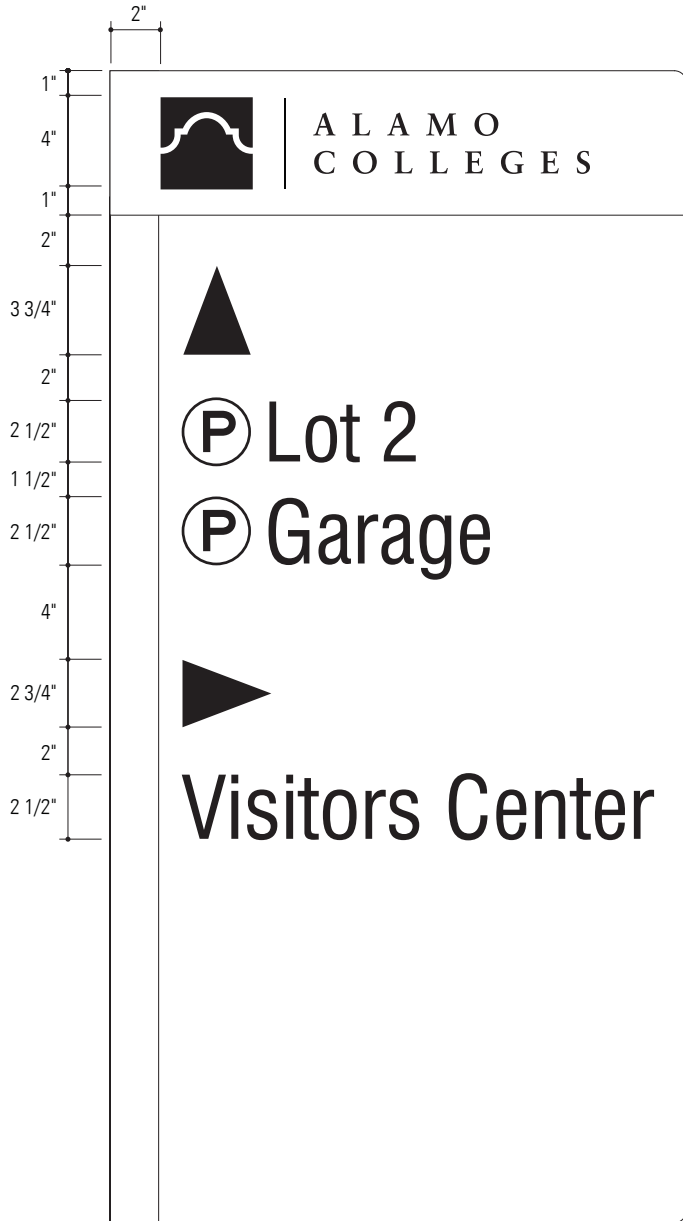
1 Top View - Clamp
Scale: 1/2" = 1"



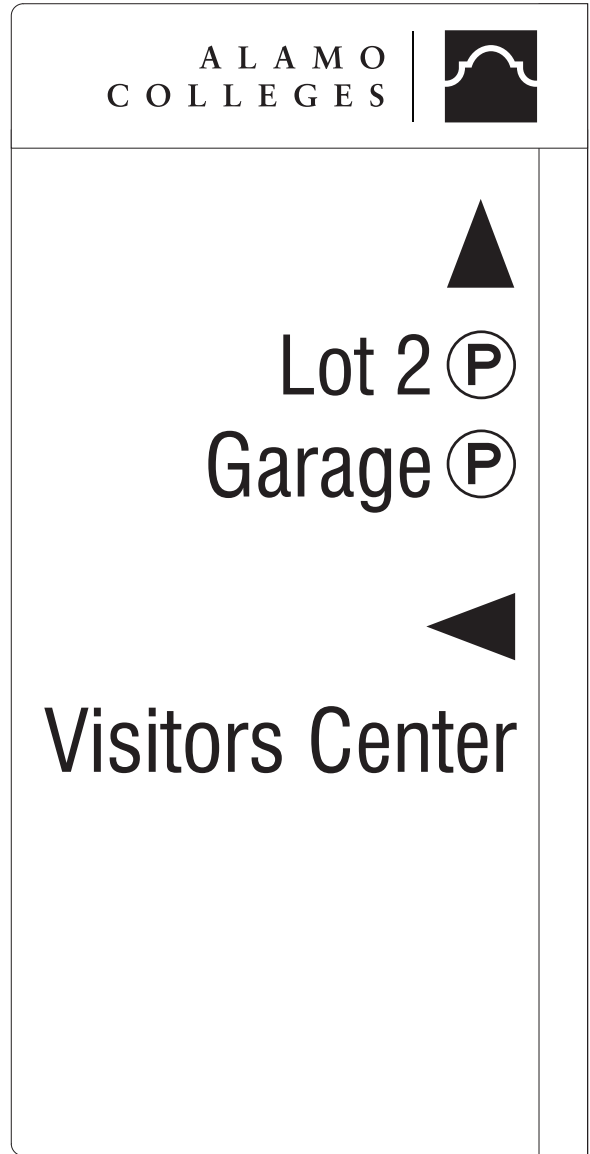
2 Elevation - Clamp
Scale: 1/2" = 1"



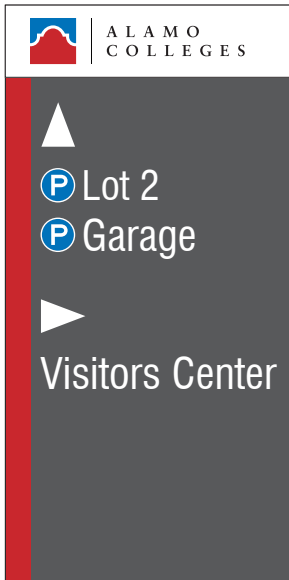
3 Elevation - Double Clamp
Scale: 1/2" = 1"



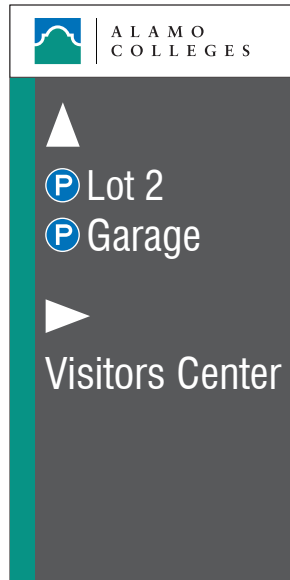
1 Graphic Detail
Scale: 1 1/2" = 1'-0"



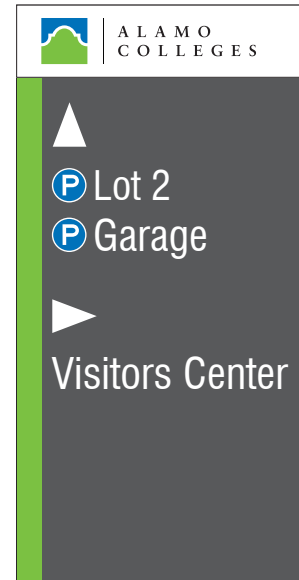
2 Graphic Detail
Scale: 1 1/2" = 1'-0"
Note: Messages justify on pole side of panel



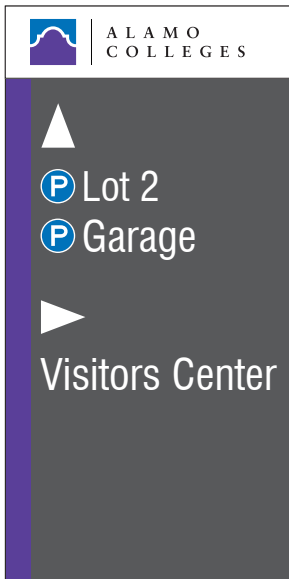
San Antonio College Scheme



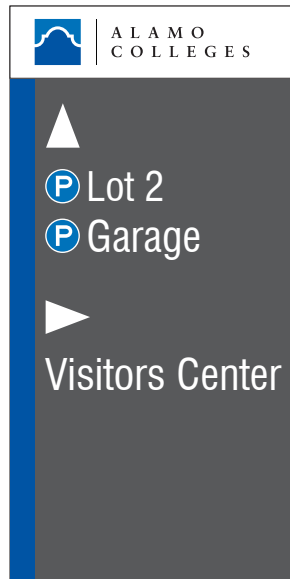
Palo Alto College Scheme



Northeast Lakeview College Scheme



Northwest Vista College Scheme

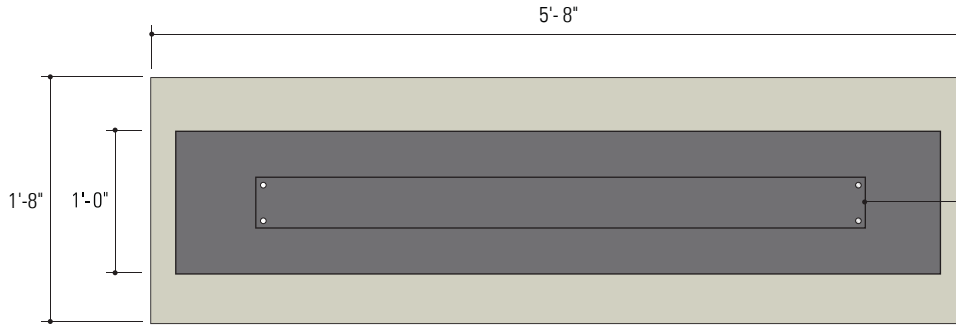


St. Philip's College Scheme

1 Accent Color Diagram
Scale: 3/4" = 1'-0"

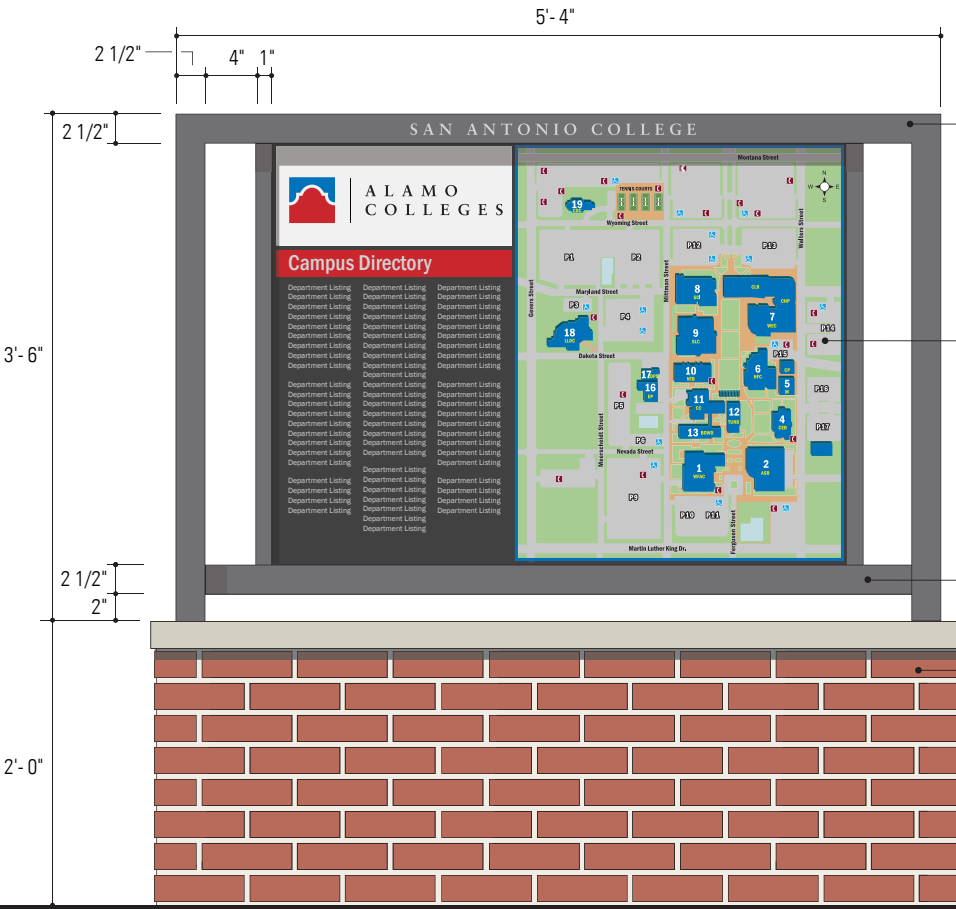


ALAMO
COLLEGES



top to have locking mechanism specified by owner, fabricator to provide detailed shop drawings

1 Top View Scale: 3/4" = 1'-0"



fabricated aluminum frame with .125 cladding with countersunk screws with heads painted to match

embedded map graphic (in design) slides in from top and anchors in base and side channels

fabricated aluminum frame slotted receptor for map

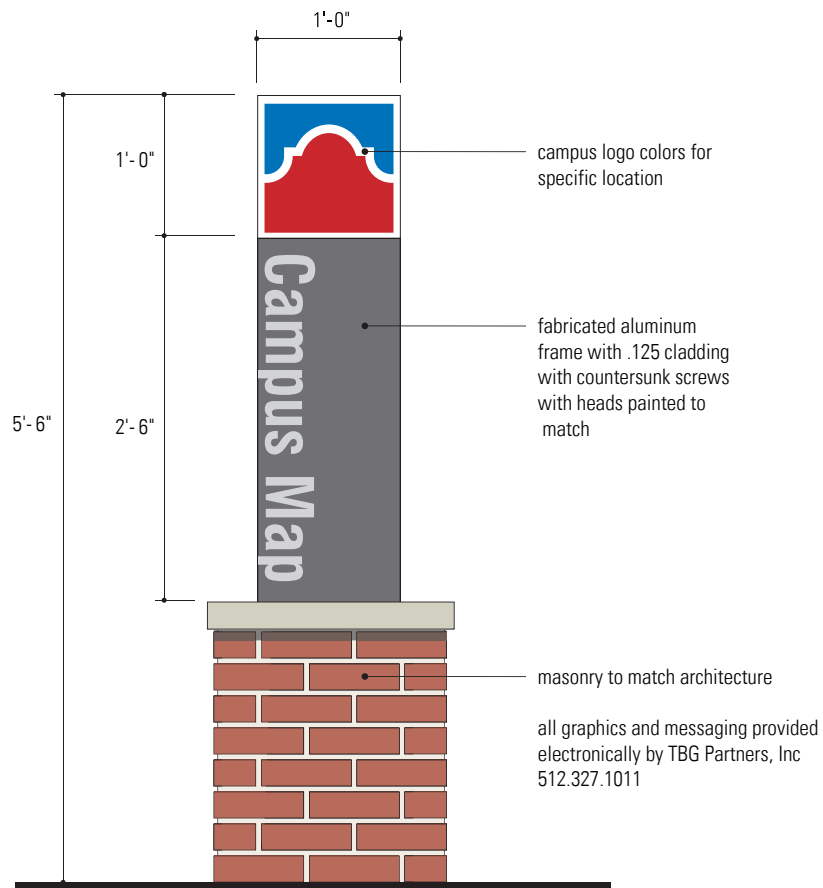
masonry to match architecture

painted graphics return top and bottom

all graphics and messaging provided electronically by TBG Partners, Inc 512.327.1011

2 Elevation Scale: 3/4" = 1'-0"

Note: Above drawings are to show design intent. All cabinets are to be constructed of aluminum angle and channel frame to be designed by sign fabricator and approved by owner. No visible fasteners and all screw heads are to be painted to match face color.

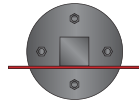


1 End View
Scale: 3/4" = 1'-0"

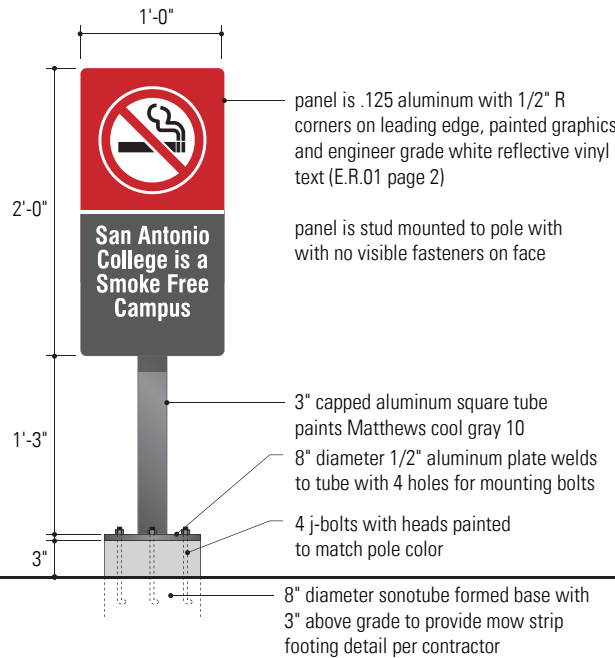


ALAMO
COLLEGES

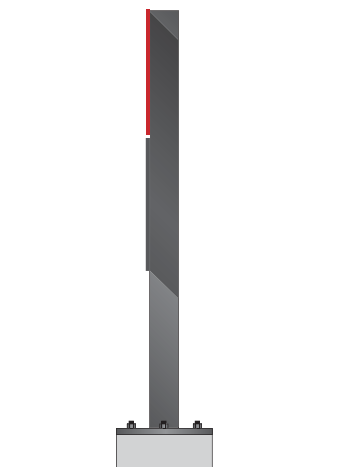
REGULATORY



3 Plan View
Scale: 3/4" = 1'-0"

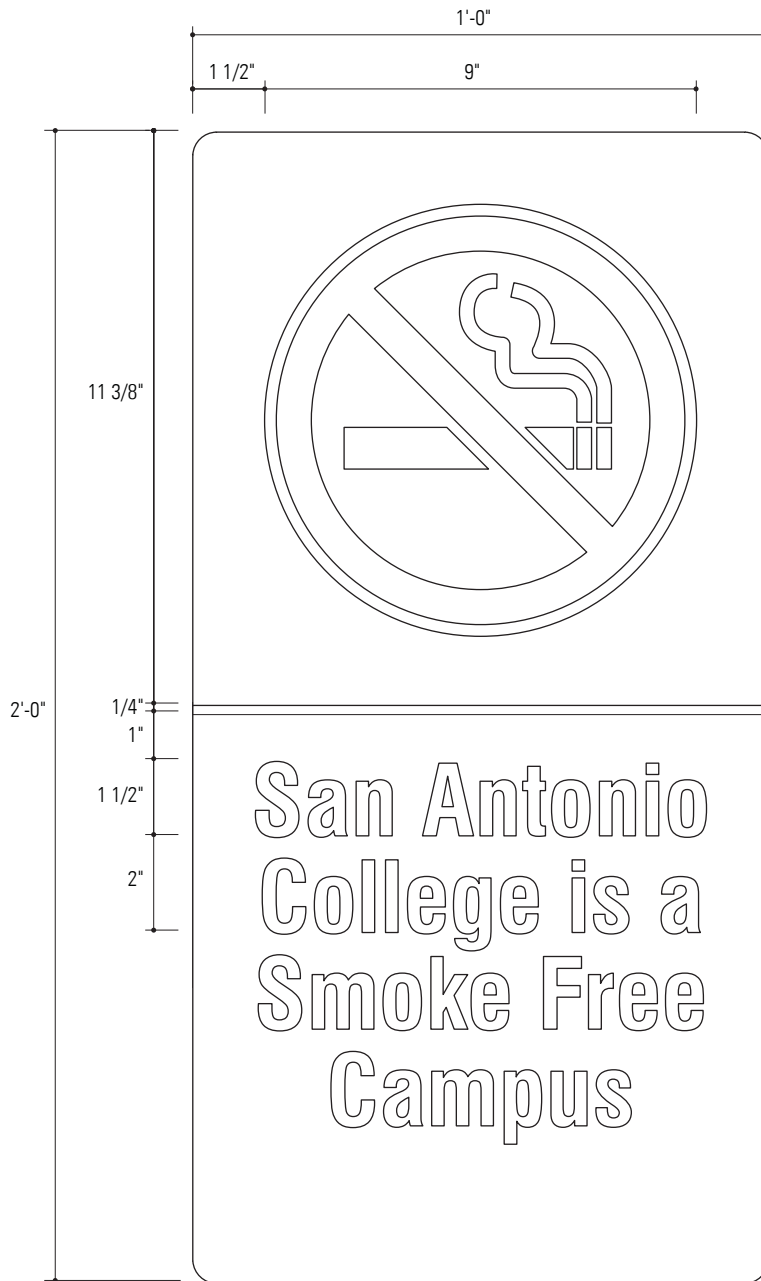


1 Elevation
Scale: 3/4" = 1'-0"



2 End View
Scale: 3/4" = 1'-0"

Note: Above drawings are to show design intent, shop drawings to be approved prior to fabrication. Fasteners and screw heads are to be painted to match face color.



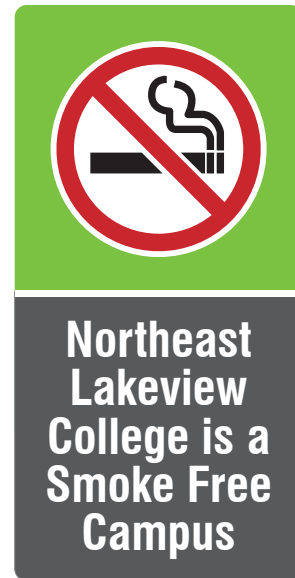
1 Elevation - Blade
Scale: 1/4" = 1"



San Antonio College Scheme



Palo Alto College Scheme



Northeast Lakeview College Scheme

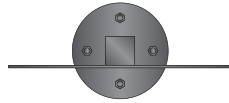


Northwest Vista College Scheme

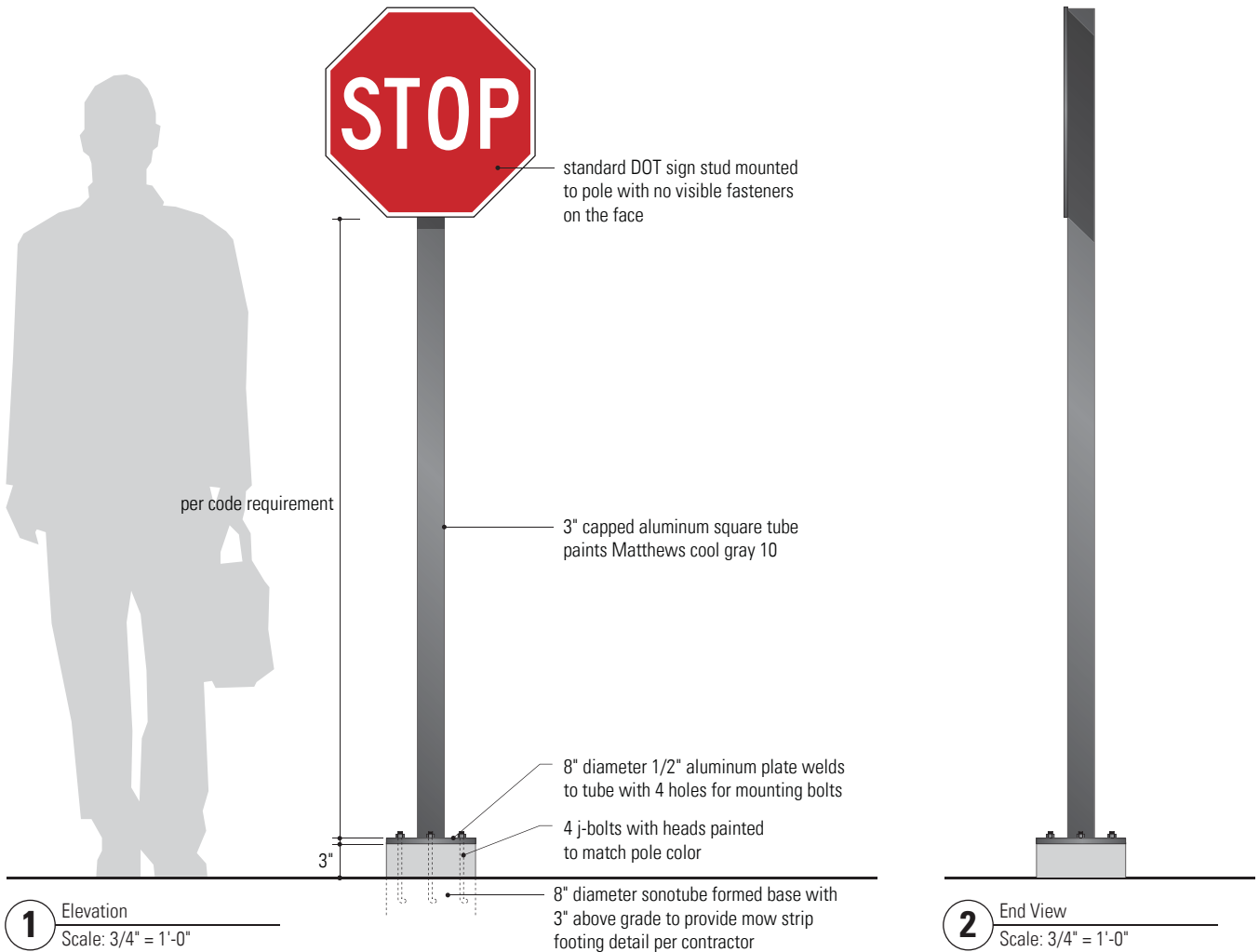


St. Philip's College Scheme

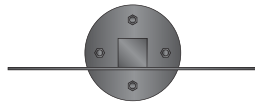
1 Accent Color Diagram
Scale: 1 1/2" = 1'-0"



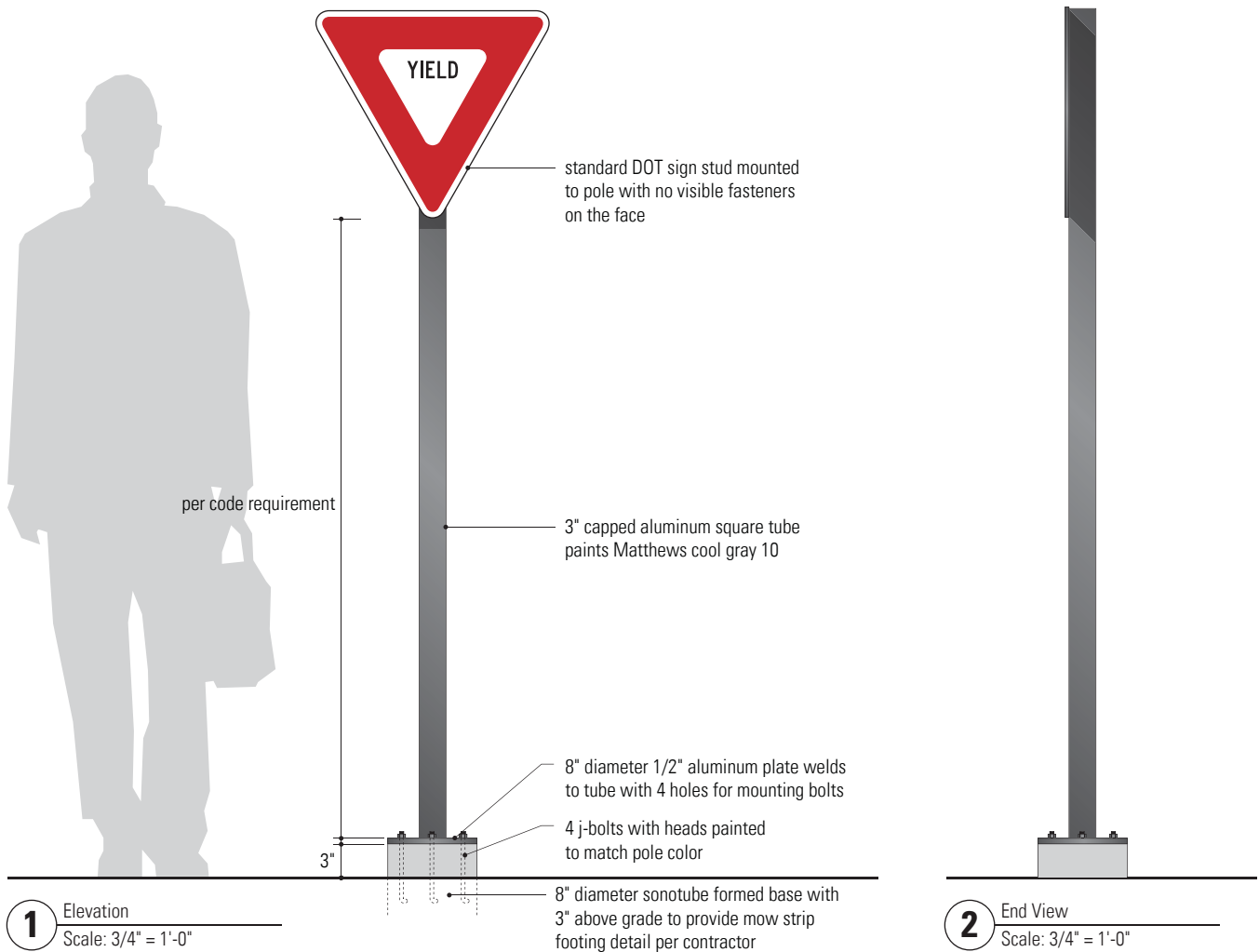
3 Plan View
Scale: 3/4" = 1'-0"



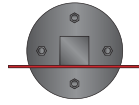
Note: Above drawings are to show design intent, shop drawings to be approved prior to fabrication. Fasteners and screw heads are to be painted to match face color.



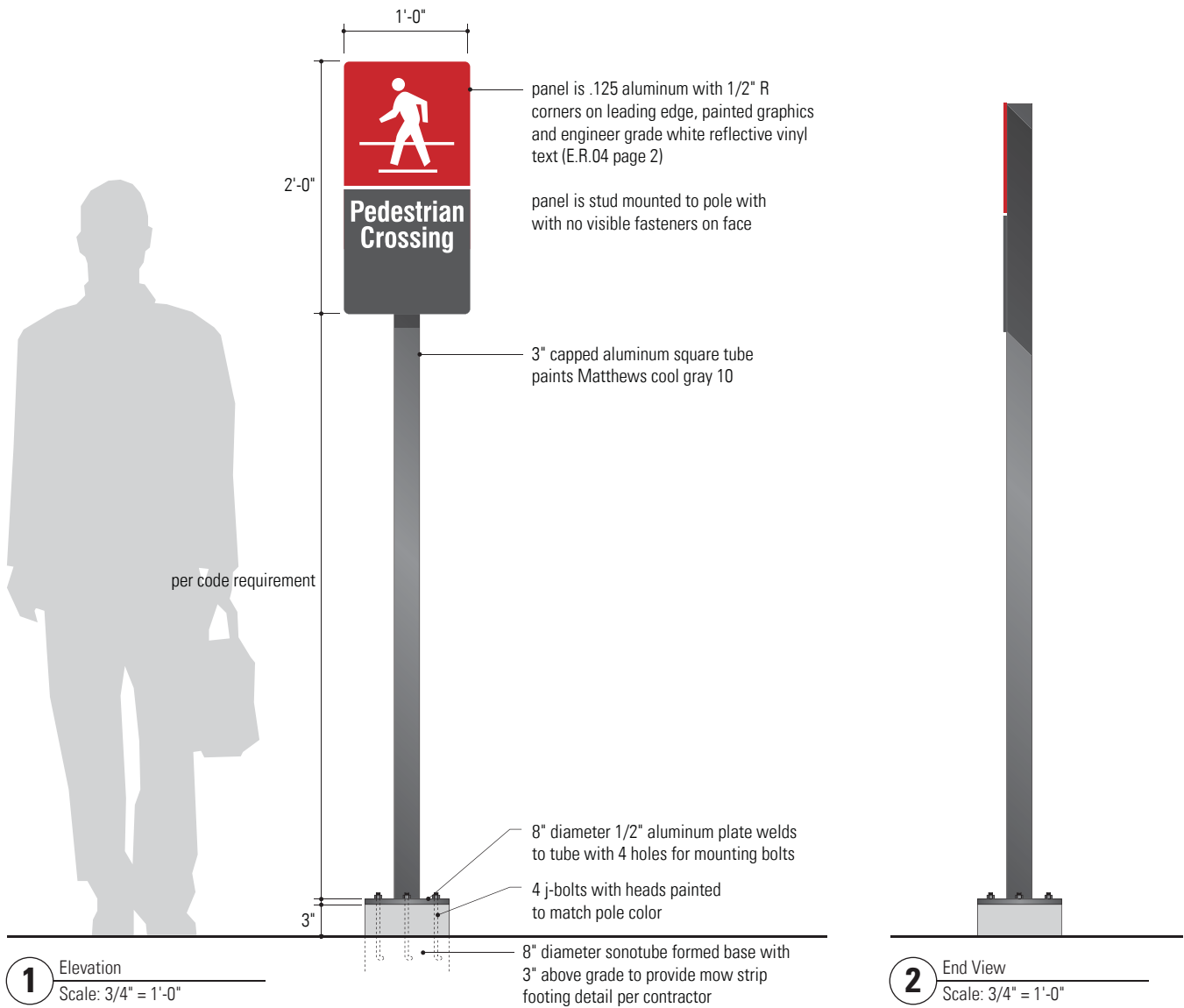
3 Plan View
Scale: 3/4" = 1'-0"



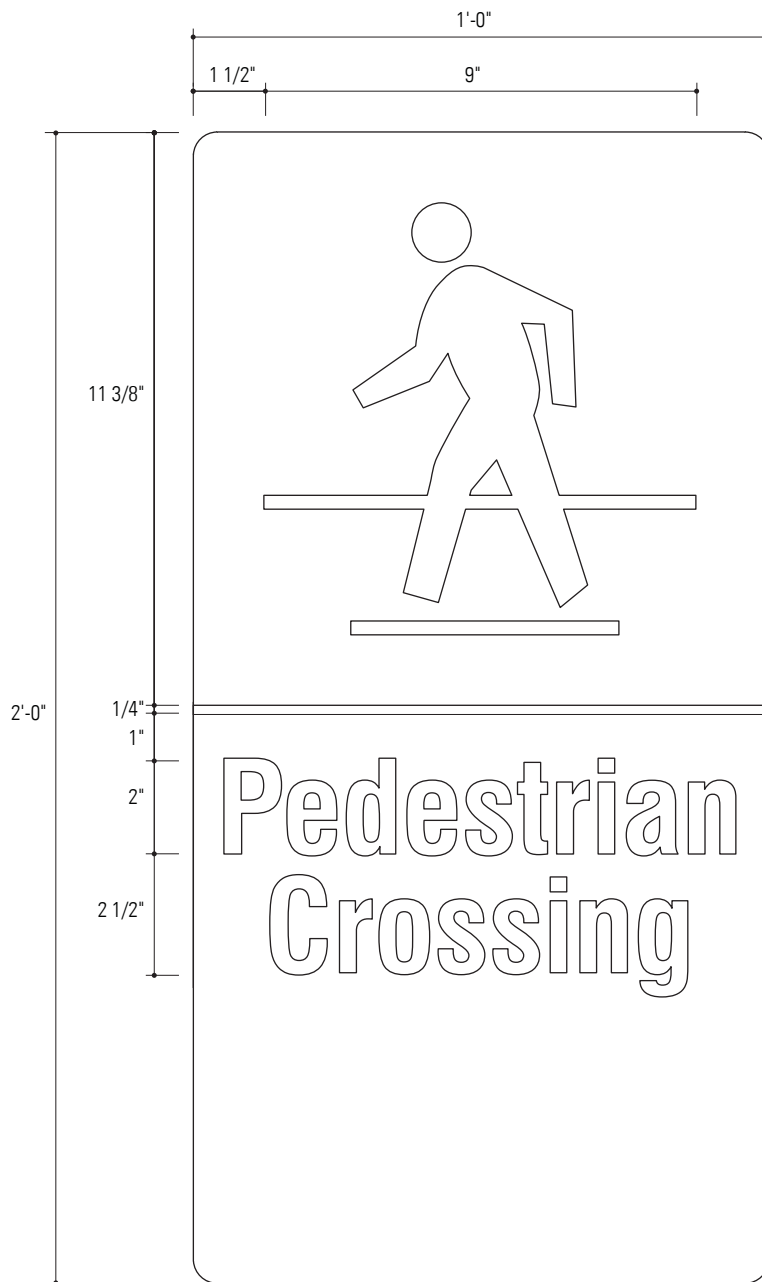
Note: Above drawings are to show design intent, shop drawings to be approved prior to fabrication. Fasteners and screw heads are to be painted to match face color.



3 Plan View
Scale: 3/4" = 1'-0"



Note: Above drawings are to show design intent, shop drawings to be approved prior to fabrication. Fasteners and screw heads are to be painted to match face color.



1 Elevation - Blade
Scale: 1/4" = 1"



San Antonio College Scheme



Palo Alto College Scheme



Northeast Lakeview College Scheme

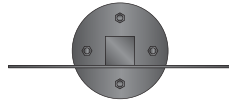


Northwest Vista College Scheme

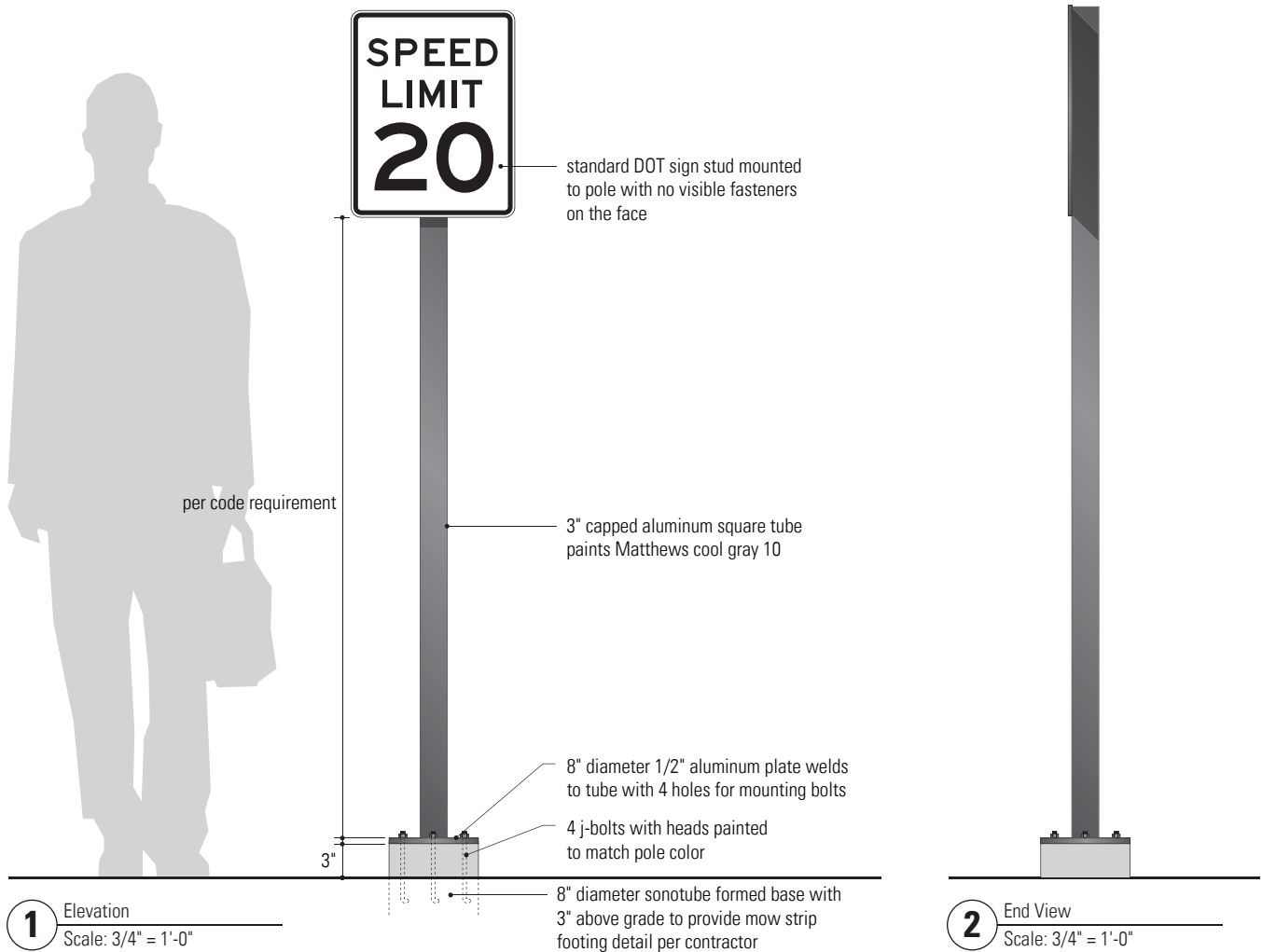


St. Philip's College Scheme

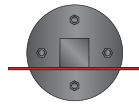
1 Accent Color Diagram
Scale: 1 1/2" = 1'-0"



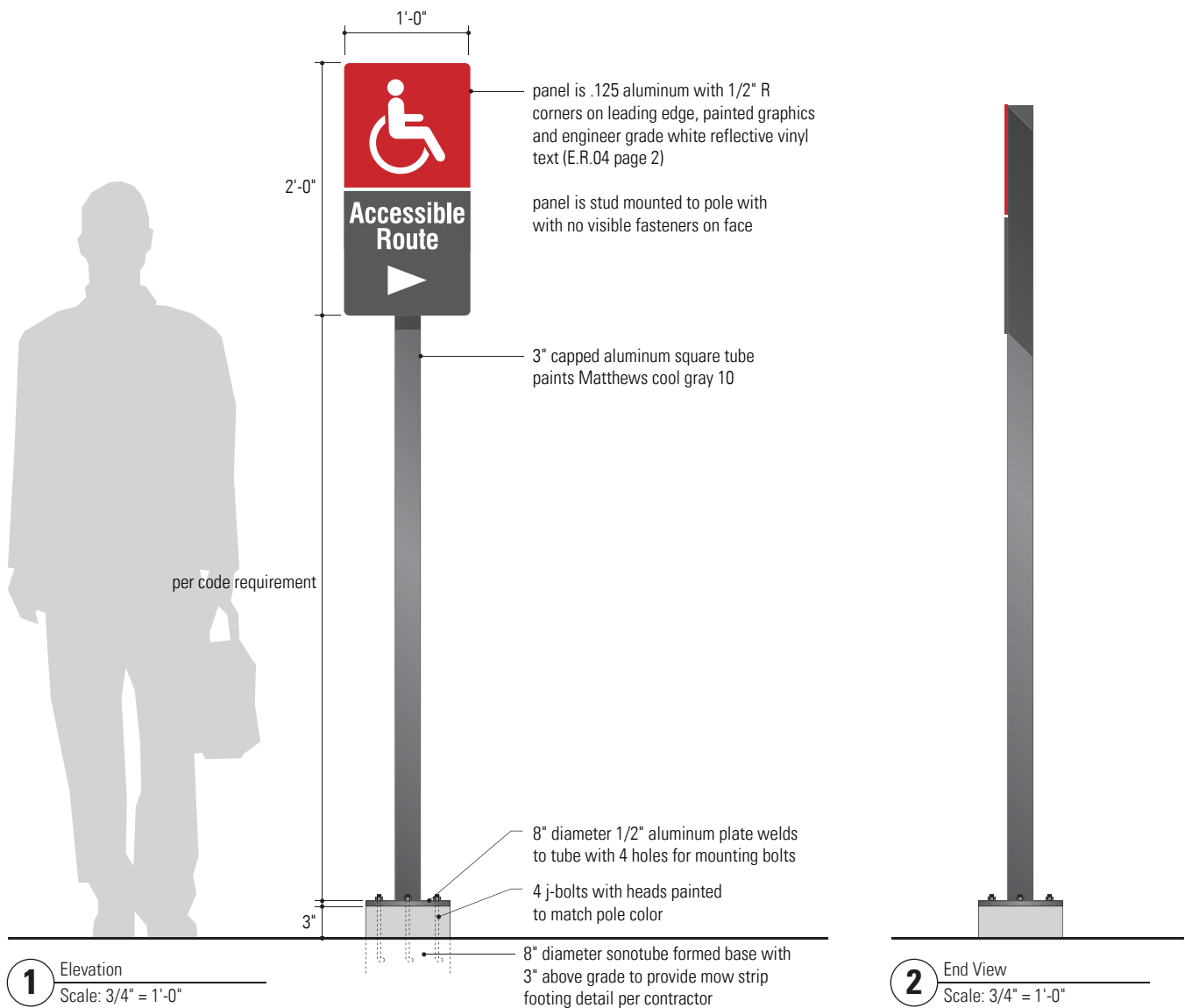
3 Plan View
Scale: 3/4" = 1'-0"



Note: Above drawings are to show design intent, shop drawings to be approved prior to fabrication. Fasteners and screw heads are to be painted to match face color.



3 Plan View
Scale: 3/4" = 1'-0"



Note: Above drawings are to show design intent, shop drawings to be approved prior to fabrication. Fasteners and screw heads are to be painted to match face color.



1 Elevation - Blade
Scale: 1/4" = 1"



San Antonio College Scheme



Palo Alto College Scheme



Northeast Lakeview College Scheme



Northwest Vista College Scheme



St. Philip's College Scheme

1 Accent Color Diagram
Scale: 1 1/2" = 1'-0"